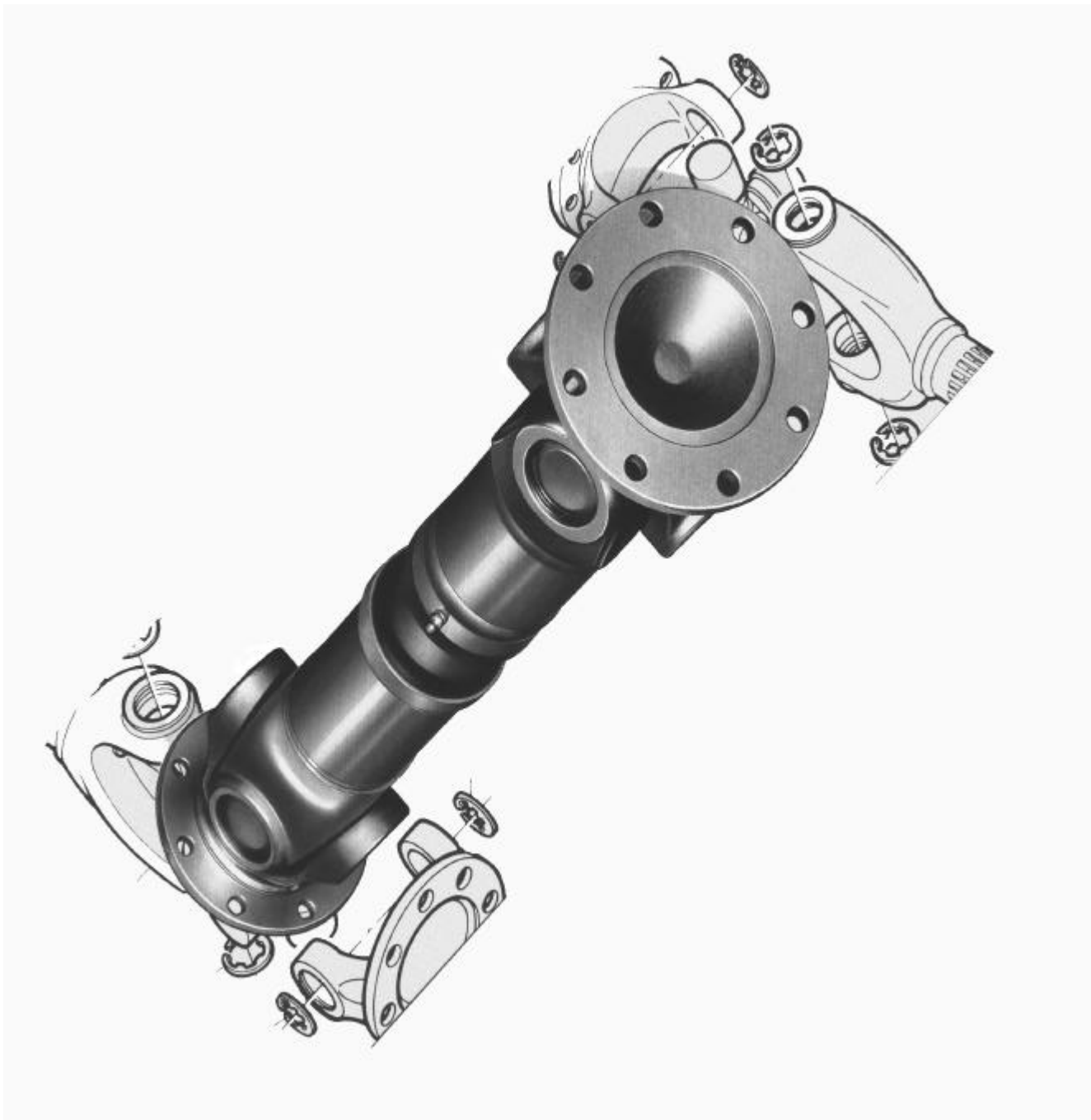


# TRANSMISIONES CARDAN



JOCAR TRANSMISIONES S.L.

c/Lezeaga, 4 48002 Bilbao

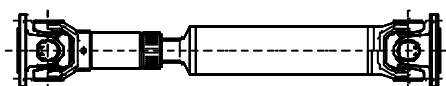
Tlf 94 427 53 40 Fax 94 427 54 93

[www.jocartransmisiones.com](http://www.jocartransmisiones.com)

e-mail: [jocar@jocartransmisiones.com](mailto:jocar@jocartransmisiones.com)

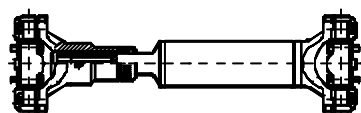
# Transmisiones cardan

INDICE CONTENTS	Páginas Pages
--------------------	------------------



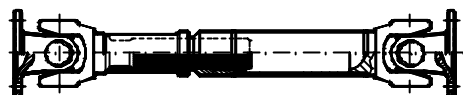
## Series " S "

Transmisiones	Drive Shafts	2 – 5
Cardancillos	Short Coupled Shafts	6 - 7
Transmisiones con puente central	Midship Shafts	8
Transmisiones con dos juntas fijas	Drive Shafts with two fixed joints	9
Juntas y Barrones	Joints and Slip Stubs Shafts	10 - 14
Cruces y horquillas	Universal Joints and Yokes	15 – 20
Puentes centrales	Centre Bearing Assemblies	21



## Series " M "

Transmisiones	Drive Shafts	22
Componentes	Components	23



## Series " D "

Transmisiones	Drive Shafts	24
Cardancillos	Short Coupled Shafts	25
Juntas	Joints	26 – 29
Cruces y Horquillas	Universal Joints and Yokes	30 – 33
Tubos	Tubing	34
Notas Técnicas	Technical notes	35 – 43



JOCAR TRANSMISIONES S.L.

c/Lezeaga, 4 48002 Bilbao

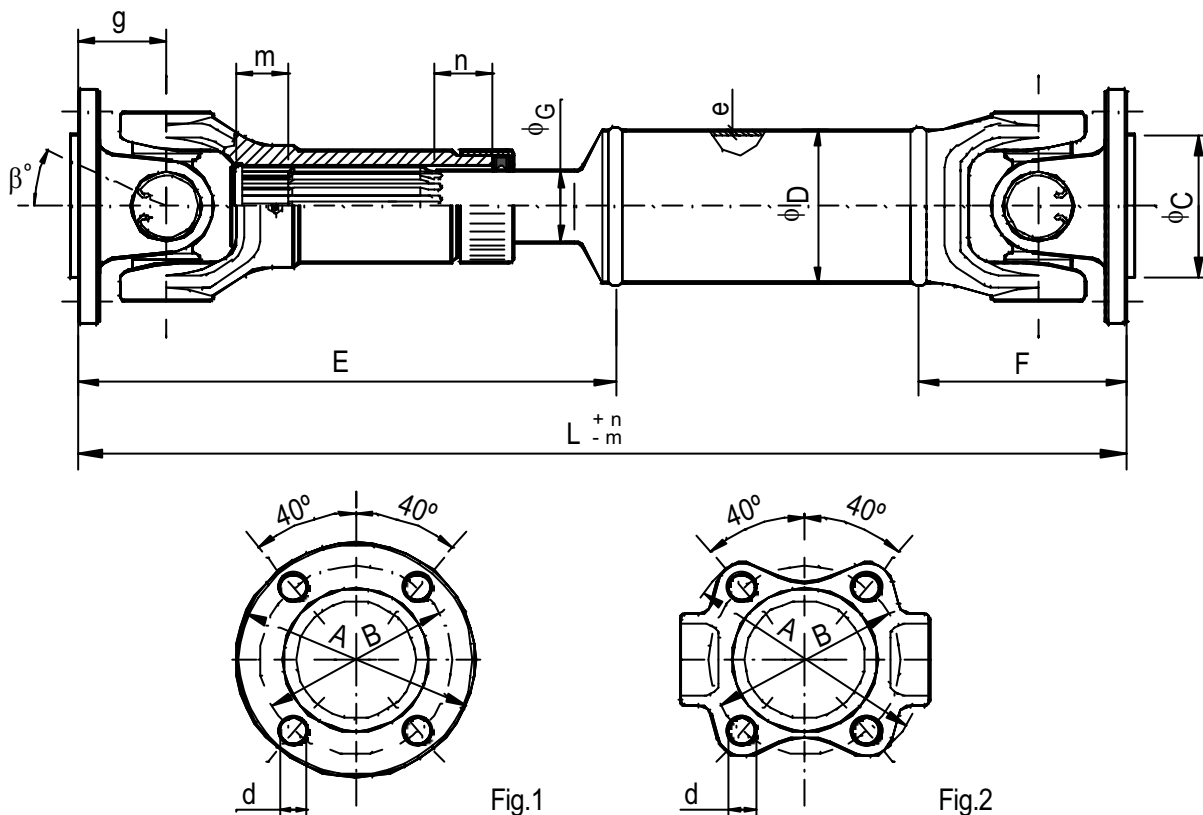
Tlf 94 427 53 40 Fax 94 427 54 93

[www.jocartransmisiones.com](http://www.jocartransmisiones.com)

e-mail: [jocar@jocartransmisiones.com](mailto:jocar@jocartransmisiones.com)

JOCAR	<b>Transmisiones SAE con acoplamientos SAE</b> <b>SAE Drive shafts with SAE Flanges fitting</b>	JOCAR
-------	--	-------

## SERIES LIGERAS - LIGHT SERIES



Rec = Recorrido - Slip movement

SERIE SERIES	REFERENCIA PART NUMBER	E	F	Rec + n - m	D x e	G	Fig	A	B	C	d	g	b° max.	
0500	1999.32-T.L CDR	160	69	+ - 18	32,0x3,5	22,8	1	77	60,32	44,45	6,5	27,0	18	
	1999.45-T.L CDR		79		45,0x2,5									
1.100	2001.51-T.L CDR	177	67	+ - 20	50,8x2,4	22,8	1	88	69,87	57,15	8,2	30,2	18	
	2001.57-T.L CDR		72		57,1x2,6									
1.300	2003.51-T.L CDR	228	78,5	+ - 26	50,8x2,4	29,2	1	97	79,39	60,32	10,2	34,9	18	
	2003.63-T.L CDR				63,5x2,5									
	2003.76-T.L CDR				76,1x2,5									
	2003.1.51-T.L CDR				50,8x2,4									
	2003.1.63-T.L CDR				63,5x2,5									
	2003.1.76-T.L CDR				76,1x2,5									
1.310	2015.51-T.L CDR	228	80	+ - 26	50,8x2,4	29,2	1	97	79,39	60,32	10,2	34,9	20	
	2015.63-T.L CDR		84		63,5x2,5									
	2015.1.51-T.L CDR		80		50,8x2,4									
	2015.1.63-T.L CDR		84		63,5x2,5									
	2015A.51-T.L CDR	258	86,5	+ - 30	50,8x2,4		2					10,2	41,3	30
	2015A.63-T.L CDR		90,5		63,5x2,5									
	2015A.1.51-T.L CDR		86,5		50,8x2,4									
	2015A.1.63-T.L CDR		90,5		63,5x2,5									

- PARA OBTENER LA REFERENCIA COMPLETA, SUSTITUIR LA "L" POR LA LONGITUD EN POSICIÓN DE TRABAJO EN mm. SI LA LONGITUD ES CERRADA, ELIMINAR LA "CDR" FINAL.



JOCAR TRANSMISIONES S.L.

c/Lezeaga, 4 48002 Bilbao

Tlf 94 427 53 40 Fax 94 427 54 93

www.jocartransmisiones.com

e-mail: jocar@jocartransmisiones.com

JOCAR	<b>Transmisiones SAE con acoplamientos SAE</b> <b>SAE Drive shafts with SAE Flanges fitting</b>	JOCAR
-------	--	-------

## SERIES MEDIAS - MEDIUM SERIES

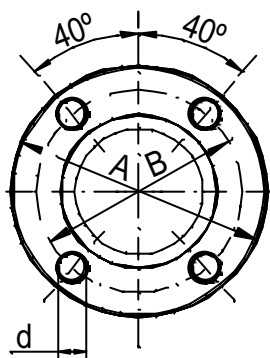
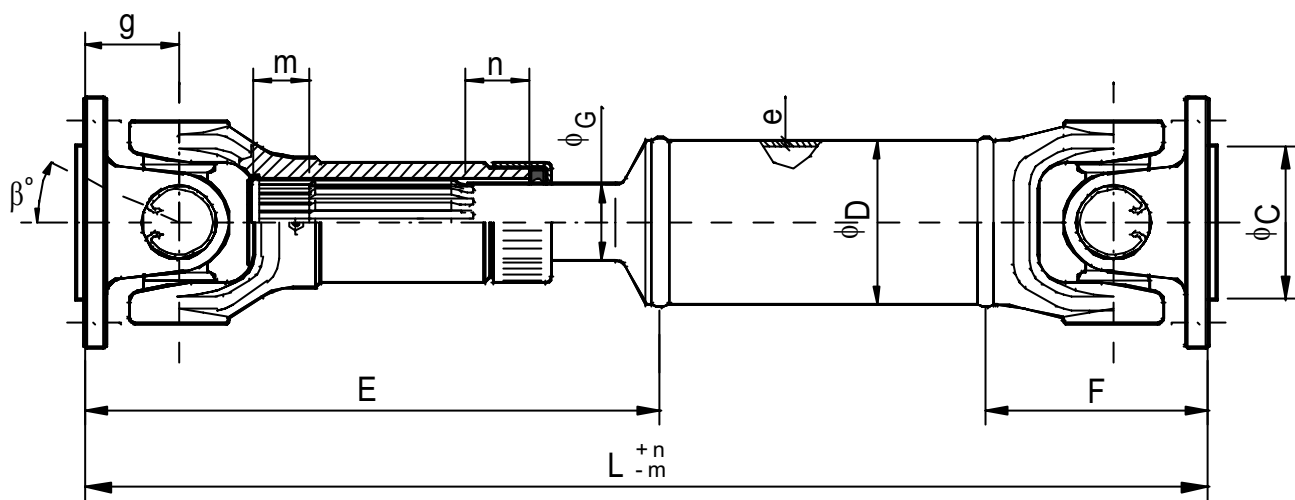


Fig.1

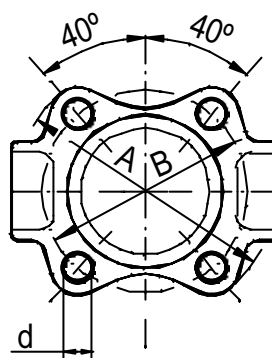


Fig.2

Rec = Recorrido - Slip movement

SERIE SERIES	REFERENCIA PART NUMBER	E	F	Rec +n -m	Dxe	G	Fig	A	B	C	d	g	$\beta^\circ$ max.		
1.350	2004.63-T.L CDR	244	97	+ - 26	63,5x2,5	32	2	118	95,27	69,85	11,2	39,7	20		
	2004.76-T.L CDR				76,1x2,5										
	2004.2.63-T.L CDR				63,5x2,5									12,1	
	2004.2.76-T.L CDR				76,1x2,5										
	2004A.63-T.L CDR	274	127		63,5x2,5		1				11,2	70,0		28	
	2004A.76-T.L CDR	76,1x2,5													
1.410	2005.63-T.L CDR	262	103	+ - 28	63,5x2,5	32	2	118	95,27	69,85	11,2	42,9	20		
	2005.76-T.L CDR		98		76,1x2,5										
	2005.2.63-T.L CDR		103		63,5x2,5									12,1	
	2005.2.76-T.L CDR		98		76,1x2,5										
1.480	2048.90-T.L CDR	276	103	+ - 28	90,0x3,0	37	2	146	120,67	95,25	12,8	51,5	20		
1.510	2006.76-T.L CDR	290	134,5	+ - 27	76,1x2,5	37	1	146	120,67	95,25	12,8	63,5	22		
	2006.90-T L CDR				297									90,0x3,0	
	2006.2.76-T.L CDR				290									76,1x2,5	14,1
	2006.2.90-T.L CDR				297									90,0x3,0	



JOCAR TRANSMISIONES S.L.

c/Lezeaga, 4 48002 Bilbao

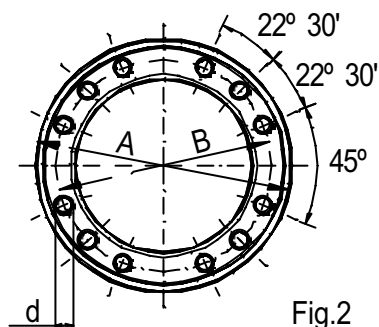
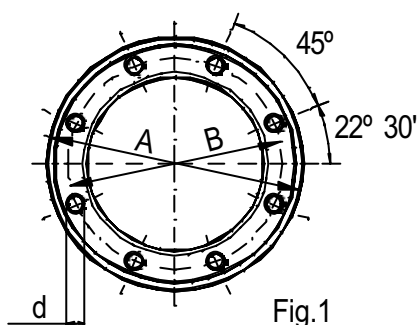
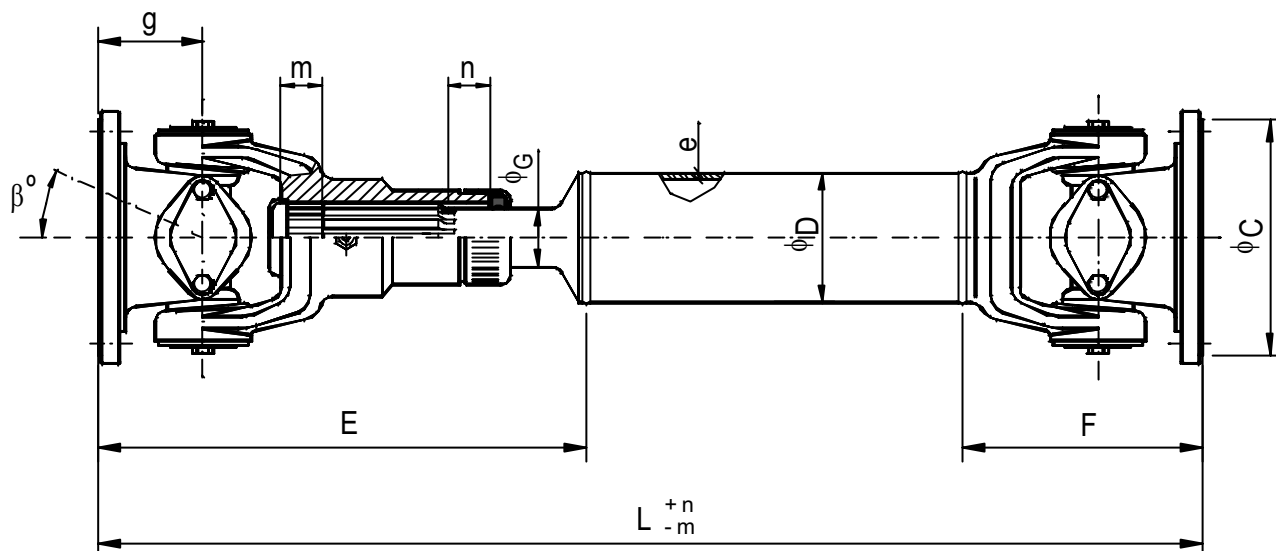
Tlf 94 427 53 40 Fax 94 427 54 93

www.jocartransmisiones.com

e-mail: jocar@jocartransmisiones.com

JOCAR	<b>Transmisiones SAE con acoplamientos SAE</b> <b>SAE Driveshafts with SAE Flanges fitting</b>	JOCAR
-------	---	-------

## SERIES PESADAS – HEAVY SERIES



Rec = Recorrido - Slip - Coulissement

SERIE SERIES	REFERENCIA PART NUMBER	E	F	Rec + n - m	D x e	G	Fig	A	B	C	d	g	beta max.
1.610	2007.90-T.L CDR	339	155	+ - 30	90 x 5	42	1	175	155,5	168,2	10,1	69,8	22
	2007R.90-T.L CDR	410		+ - 50									
	2007.1.90-T.L CDR	339		+ - 30							9,75		
	2007R.1.90-T.L CDR	410		+ - 50									
1.710	2008.90-T.L CDR	404	176	+ - 40	90 x 5	51	1	203	184,1	196,9	10,1	76,2	30
	2008.1.90-T.L CDR										9,75		
	2008.12.90-T.L CDR						10,1						
	2008.12.1.90-T.L CDR						11,2						
	2008M.90-T.L CDR	442		+ - 50			1				10,1		
	2008M.1.90-T.L CDR										9,75		
	2008M.12.90-T.L CDR						10,1						
	2008M.12.1.90-T.L CDR						11,2						
1.800	2009.110-T.L CDR	445	174	+ - 45	110 x 6	61	2	203	184,1	196,9	11,2	82,0	20

- PARA OBTENER LA REFERENCIA COMPLETA, SUSTITUIR LA "L" POR LA LONGITUD EN POSICIÓN DE TRABAJO EN mm. SI LA LONGITUD ES CERRADA, ELIMINAR LA "CDR" FINAL.



JOCAR TRANSMISIONES S.L.

c/Lezeaga, 4 48002 Bilbao

Tlf 94 427 53 40 Fax 94 427 54 93

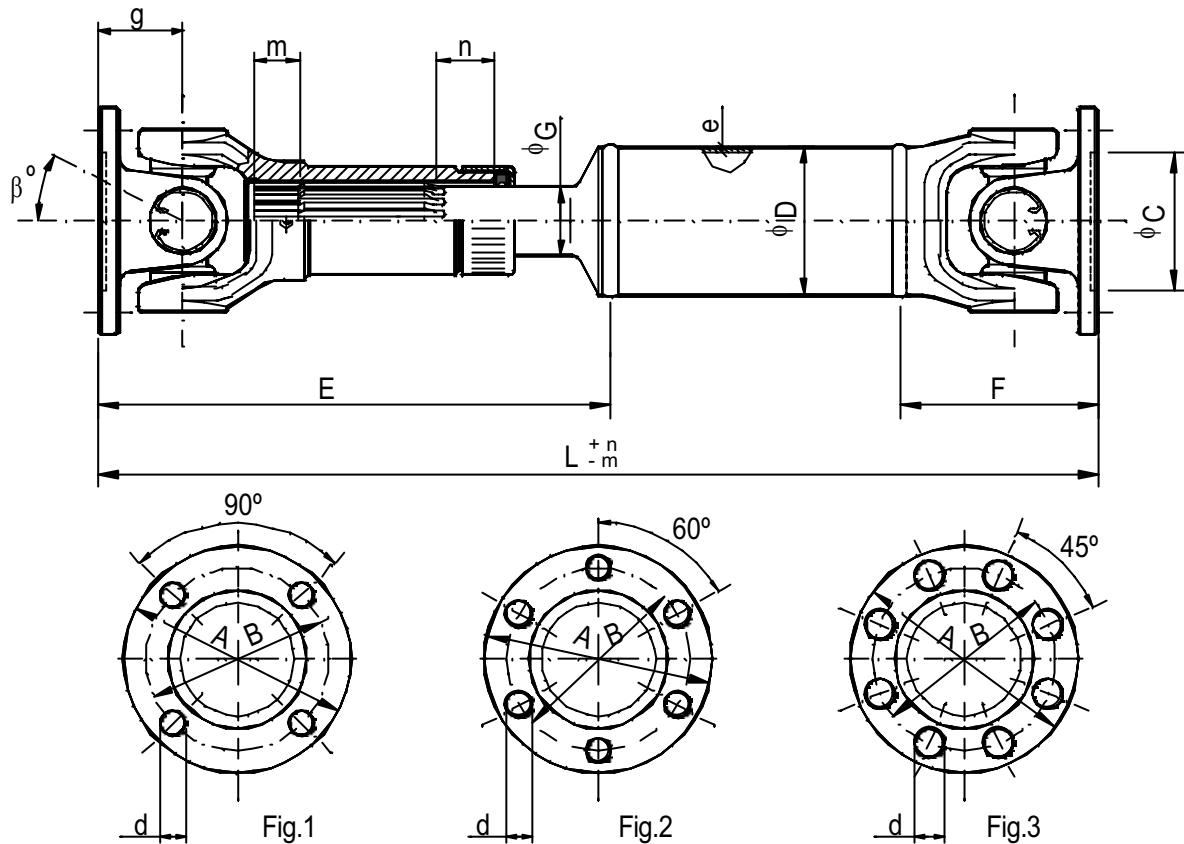
www.jocartransmisiones.com

e-mail: jocar@jocartransmisiones.com

JOCAR

## Transmisiones SAE con acoplamientos DIN SAE Drive shafts with DIN Flanges fitting

JOCAR



Rec = Recorrido - Slip movement

SERIE SERIES	REFERENCIA PART NUMBER	E	F	Rec + n - m	D x e	G	Fig	A	B	C	d	g	β° max.	
0500	1999D1.32-T.L CDR	171	80	+ - 18	32x3,5	22,8	1	58	47	30	5,1	38,5	18	
	65							52	35	6,1				
	1999D3.32-T.L CDR						2	75	62	42	6,1			
1.100	2001D.51-T.L CDR	198	75,5	+ - 20	50,8x2,4	22,8	2	75	62	42	6,1	38,5	18	
	80,5		57,1x2,6											
1.310	2015D.51-T.L CDR	243	95	+ - 26	50,8x2,4	29,2	1	90	74,5	47	8,1	50	20	
	2015D.63-T.L CDR		99		63,5x2,5									
	2015D4.51-T.L CDR	246	98		50,8x2,4		2	100	84	57	8,1			53
	2015D4.63-T.L CDR		102		63,5x2,5									
1.350	2004D.63-T.L CDR	259	112	+ - 26	63,5x2,5	32	2	100	84	57	8,1	55	25	
	2004D.76-T.L CDR				76,1x2,5									
1.410	2005D.63-T.L CDR	275	116	+ - 28	63,5x2,5	32	3	120	101,5	75	10,1	56	20	
	2005D.76-T.L CDR		111		76,1x2,5									
1.480	2048D.90-T.L CDR	290	116,5	+ - 28	90,0x3,0	32	3	120	101,5	75	10,1	65	22	
	2006D.76-T.L CDR													301
1.510	2006D.90-T.L CDR	308	90,0x3,0											
	1.550	2055D.90-T.L CDR	320	135	+ - 32	90,0x5,0	37	3	150	130	90	12,1	80	25
1.610	2007D.90-T.L CDR	355	172	+ - 30	90,0x5,0	42	3	150	130	90	12,1	87	22	
1.710	2008D.90-T.L CDR	414	186,5	+ - 40	90,0x5,0	51	3	180	155,5	110	14,1	86,5	25	

- PARA OBTENER LA REFERENCIA COMPLETA, SUSTITUIR LA "L" POR LA LONGITUD EN POSICIÓN DE TRABAJO EN mm. SI LA LONGITUD ES CERRADA, ELIMINAR LA "CDR" FINAL.  
- FOR OBTAINING THE COMPLETE REFERENCE, SUBSTITUTE THE "L" BY THE WORKING LENGTH IN mm. IF THE LENGTH IS CLOSED ELIMINATE THE "CDR" OF THE END.



JOCAR TRANSMISIONES S.L.

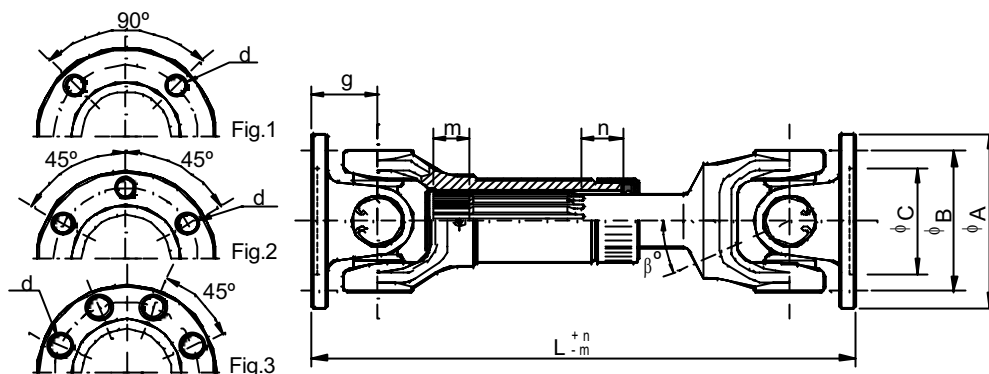
c/Lezeaga, 4 48002 Bilbao

Tlf 94 427 53 40 Fax 94 427 54 93

www.jocartransmisiones.com

e-mail: jocar@jocartransmisiones.com

JOCAR	<b>Cardancillos SAE con acoplamientos DIN</b> <b>SAE Short Coupled Shafts with DIN flanges fitting</b>	JOCAR
-------	---	-------



Rec = Recorrido - Slip movement

SERIE SERIES	REFERENCIA PART NUMBER	L	Rec + n - m	Fig	A	B	C	d	g	β° max.
0500	1999D1-T.221 CDR	221	+ - 10	1	58	47	30	5,1	38,5	18
	1999D1-T.230 CDR	230								
	1999D2-T.221 CDR	221			65	52	35	6,1		
	1999D2-T.230 CDR	230								
	1999D3-T.221 CDR	221		2	75	62	42	6,1		
	1999D3-T.230 CDR	230								
1.100	2001D1-T.203 CDR	203	+ - 10	2	75	62	42	6,1	38,5	18
	2001D1-T.225 CDR	225	+ - 14							
	2001D1-T.245 CDR	245								
1.310	2015D-T.263 CDR	263	+ - 13	1	90	74,5	47	8,1	50	20
	2015D-T.289 CDR	289	+ - 22							
	2015D-T.312 CDR	312								
	2015D-T.325 CDR	325	+ - 27							
	2015D-T.352 CDR	352	+ - 32							
	2015D-T.361 CDR	361	+ - 36							
	2015D4-T.269 CDR	269	+ - 13	2	100	84	57	8,1	53	20
	2015D4-T.295 CDR	295	+ - 22							
	2015D4-T.318 CDR	318								
	2015D4-T.331 CDR	331	+ - 27							
	2015D4-T.358 CDR	358	+ - 32							
2015D4-T.367 CDR	367	+ - 36								
1.350	2004D-T.316 CDR	316	+ - 16	2	100	84	57	8,1	55	20
	2004D-T.332 CDR	332	+ - 18							
	2004D-T.348 CDR	348								
	2004D-T.357 CDR	357	+ - 25							
1.410	2005D-T.274 CDR	274	+ - 10	3	120	101,5	75	10,1 - 8,1	56	20
	2005D-T.280 CDR	280								
	2005D-T.303 CDR	303	+ - 18							
	2005D-T.359 CDR	359	+ - 25							
1.510	2006D-T.351 CDR	351	+ - 15	3	120	101,5	75	10,1	75	22
	2006D-T.363 CDR	363								
	2006D-T.408 CDR	408								
1.610	2037D	333	+ - 9	3	150	130	90	12,1	87	8
	2007D-T.434 CDR	434	+ - 20							22
	2007D-T.480 CDR	480								
1.710	2038D.1	351	+ - 13	3	180	155,5	110	14,1	86,5	8
	2038D.2	379								



JOCAR TRANSMISIONES S.L.

c/Lezeaga, 4 48002 Bilbao

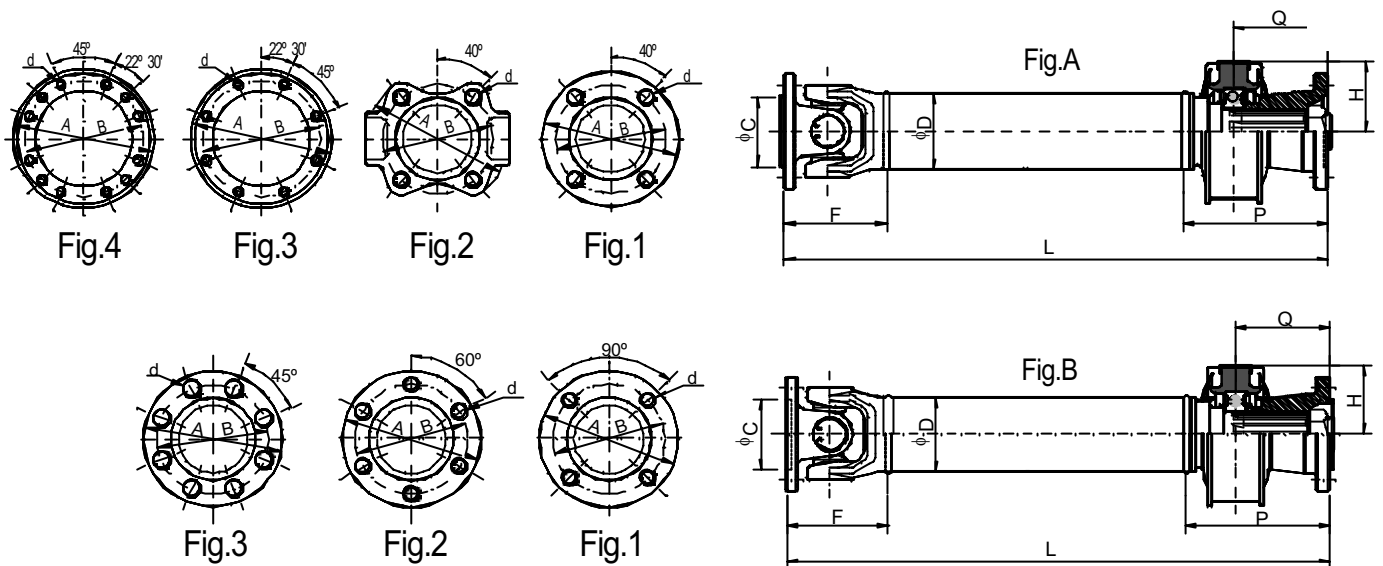
Tlf 94 427 53 40 Fax 94 427 54 93

www.jocartransmisiones.com

e-mail: jocar@jocartransmisiones.com



JOCAR	<b>Transmisiones SAE con puente central SAE Midship Shafts</b>	JOCAR
-------	--	-------



SERIE SERIES	REFERENCIA PART NUMBER	Fig	D	F	P	Q	H	A	B	C	d		
1.100	2001.51-TFPC.L	A-1	50,8	67,0	119	78	57,2	88	69,87	57,15	8,2		
	2001.57-TFPC.L		57,1	72,0									
	2001D.51-TFPC.L	B-2	50,8	75,5				75	62,00	42,00	6,1		
	2001D.57-TFPC.L		57,1	85,5									
1.300	2003.51-TFPC.L	A-1	50,8	78,5	111	70,5	57,2	97	79,39	60,32	10,2 - 9,75		
	2003.63-TFPC.L		63,5										
	2003.76-TFPC.L		76										
1.310	2015.51-TFPC.L	A-1	50,8	80,0	111	70,5	57,2	97	79,39	60,32	10,2 - 9,75		
	2015.63-TFPC.L		63,5	84,0									
	2015D4.51-TFPC.L	B-2	50,8	98,0				100	84,0	57,0	8,1		
	2015D4.63-TFPC.L		63,5	102,0									
1.350	2004.63-TFPC.L	A-2	63,5	97,0	125	81,5	62,5	118	95,27	69,85	11,2 - 12,1		
	2004.76-TFPC.L		76,1										
	2004D.63-TFPC.L	B-2	63,5	112,0	119	74		100	84,0	57,0	8,1		
	2004D.76-TFPC.L		76,1										
1.410	2005.63-TFPC.L	A-2	63,5	103,0	125	81,5	62,5	118	95,27	69,85	11,2 - 12,1		
	2005.76-TFPC.L		76,1	98,0									
	2005D.63-TFPC.L	B-3	63,5	116,0				120	101,5	75,0	10,1		
	2005D.76-TFPC.L		76,1	111,0									
1.510	2006.76-TFPC.L	A-1	76,1	134,5	130	85,5	69,1	146	120,67	95,25	12,8 - 14,1		
	2006.90-TFPC.L		90,0										
	2006D.76-TFPC.L	B-3	76,1	146,0				127	82,5	120	101,5	75,0	10,1
	2006D.90-TFPC.L		90,0										
1.610	2007.90-TFPC.L	A-3	90,0	155,0	136	94,5	69,1	175	155,5	168,2	10,1 - 9,75		
	2007D.90-TFPC.L	B-3		172,0				150	130,0	90,0	12,1		
1.710	2008.90-TFPC.L	A-3	90,0	176,0	156	110	71,5	203	184,1	196,9	10,1 - 9,75		
	2008.12.90-TFPC.L	A-4						186,5	180	155,5	110,0	10,1 - 11,1	
	2008D.90-TFPC.L	B-3		186,5				180	155,5	110,0	14,1		



JOCAR TRANSMISIONES S.L.

c/Lezeaga, 4 48002 Bilbao

Tlf 94 427 53 40 Fax 94 427 54 93

www.jocartransmisiones.com

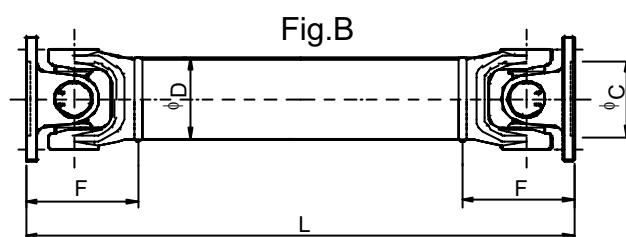
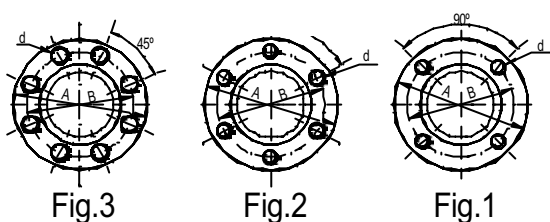
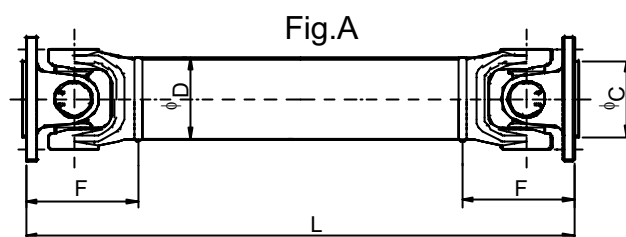
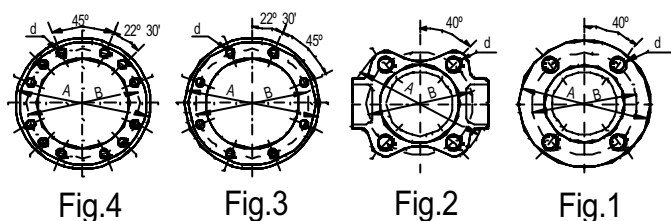
e-mail: jocar@jocartransmisiones.com



JOCAR

## Transmisiones SAE con dos juntas fijas SAE Drive shafts with two fixed joints

JOCAR



SERIE SERIES	REFERENCIA PART NUMBER	Fig	D	F	A	B	C	d
1.100	2001.51-TF.L	A-1	51	67,0	88	69,87	57,15	8,2
	2001.57-TF.L		57	72,0				
	2001D.51-TF.L	B-2	51	75,5				
	2001D.57-TF.L		57	80,5				
1.300	2003.51-TF.L	A-1	51	78,5	97	79,39	60,32	10,2 - 9,75
	2003.63-TF.L		63					
	2003.76-TF.L		76					
1.310	2015.51-TF.L	A-1	51	80,0	97	79,39	60,32	10,2 - 9,75
	2015.63-TF.L		63	84,0				
	2015D.51-TF.L	B-1	51	95,0				
	2015D.63-TF.L		63	99,0				
	2015D4.51-TF.L	B-2	51	98,0				
	2015D4.63-TF.L		63	102,0				
1.350	2004.63-TF.L	A-2	63	97,0	118	95,27	69,85	11,2 - 12,1
	2004.76-TF.L		76					
	2004D.63-TF.L	B-2	63	112,0				
	2004D.76-TF.L		76					
1.410	2005.63-TF.L	A-2	63	103,0	118	95,27	69,85	11,2 - 12,1
	2005.76-TF.L		76	98,0				
	2005D.63-TF.L	B-3	63	116,0				
	2005D.76-TF.L		76	111,0				
1.510	2006.76-TF.L	A-1	76	134,5	146	120,67	95,25	12,8 - 14,1
	2006.90-TF.L		90					
	2006D.76-TF.L	B-3	76	146,0				
	2006D.90-TF.L		90					
1.610	2007.90-TF.L	A-3	90	155,0	175	155,5	168,2	10,1 - 9,75
	2007D.90-TF.L	B-3		172,0	150	130,0	90,0	12,1
1.710	2008.90-TF.L	A-3	90	176	203	184,1	196,9	10,1 - 9,75
	2008.12.90-TF.L	A-4						10,1 - 11,1
	2008D.90-TF.L	B-3						186,5
1.800	2009.110-TF.L	A-4	110	178,0	203	184,1	196,9	11,1



JOCAR TRANSMISIONES S.L.

c/Lezeaga, 4 48002 Bilbao

Tlf 94 427 53 40 Fax 94 427 54 93

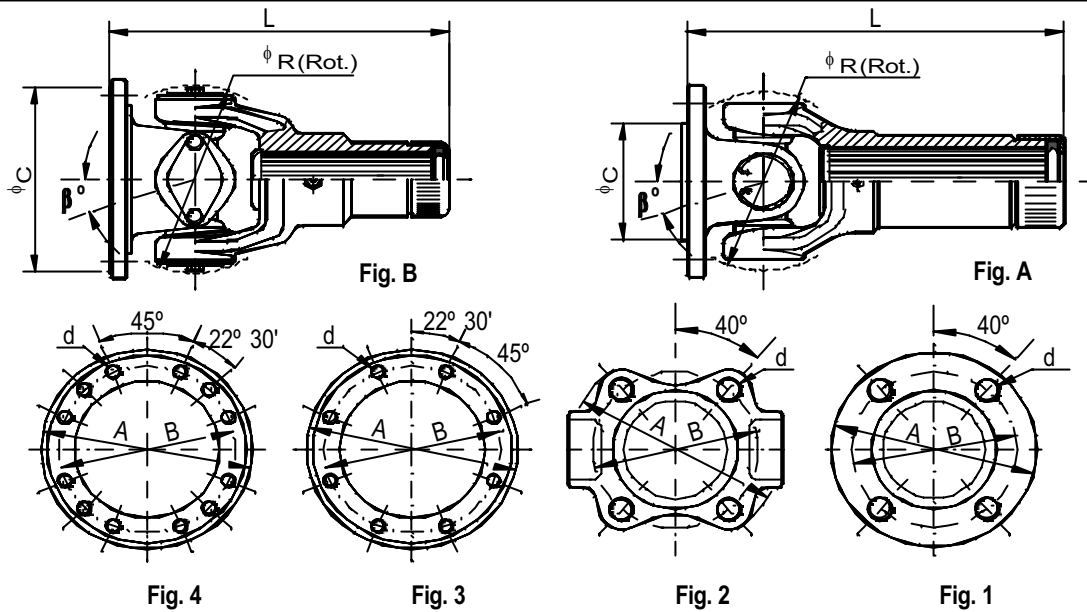
www.jocartransmisiones.com

e-mail: jocar@jocartransmisiones.com

JO CAR

## Juntas correderas SAE con acoplamientos SAE SAE Slip Joints with SAE Flange fitting

JO CAR



SERIE SERIES	REFERENCIA PART NUMBER	Fig	A	B	C	d	L	R	$\beta^\circ$ max.	
0500	1999-C	A - 1	77,0	60,3	44,4	6,5	136	65	18	
1.100	2001-C	A - 1	88,0	69,9	57,1	8,1	150	76	18	
1.300	2003.1-C	A - 1	97,0	79,4	60,3	9,7	181	92	18	
	2003-C					10,2				
1.310	2015.1R-C	A - 1	88,0	69,9	57,1	8,1	194	97	20	
	2015.1-C					9,7				
	2015-C					10,2				
	2015A.1-C	A - 2	97,0	79,4	60,3	9,7	216	30		
	2015A-C					10,2				
	2015R70-C	A - 1	97,0	79,4	60,3	10,2	200	20		
2015.5-C	A - 2	118,0	95,3	69,9	11,2	182				
1.350	2004.3-C	A - 1	97,0	79,4	60,3	10,2	212	114	20	
	2004-C	A - 2				11,2				
	2004.2-C	A - 1				12,1				
	2004A-C					11,2				227
1.410	2005-C	A - 2	118,0	95,3	69,9	11,2	219	122	20	
	2005.2-C					12,1				
1.480	2048-C	A - 2	146,0	120,7	95,2	12,8	233	122	22	
1.510	2006-C	A - 1	146,0	120,7	95,2	12,8	245	136	22	
	2006.2-C					14,1				
1.610	2007.1-C	B - 3	174,6	155,5	168,2	9,7	277	160	22	
	2007-C					10,2				
1.710	2008.1-C	B - 3	203,2	184,1	196,8	9,7	339	200	30	
	2008-C					10,2				
	2008M-C					10,2				368
	2008.12-C	B - 4	11,2	339						
1.760	2076-C	B - 4	203,2	184,1	196,8	11,2	320	205	30	
	2076-CL					11,2				368
1.800	2009.10-C	B - 4	203,2	184,1	196,8	11,2	404	205	20	
	2009A.10-C					11,2				408
	2009.16-C					11,2				422
	2009A.16-C					11,2				426
1.810	2081-C	B - 4	203,2	184,1	196,8	11,2	346	217	20	
	2081-CL					11,2				387

JO CAR

## Juntas correderas SAE con acoplamientos DIN SAE Slip Joints with DIN Flange fitting

JO CAR

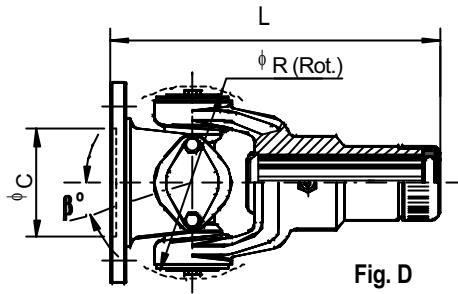


Fig. D

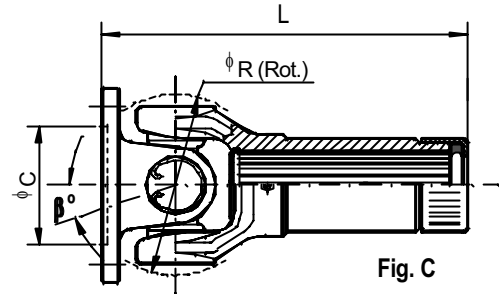


Fig. C

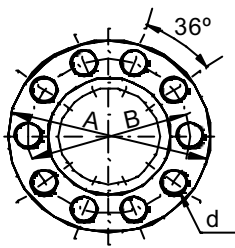


Fig. 8

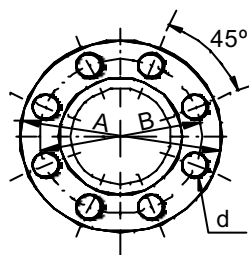


Fig. 7

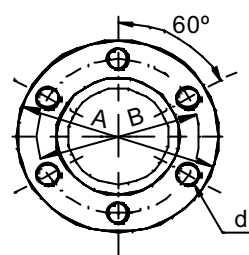


Fig. 6

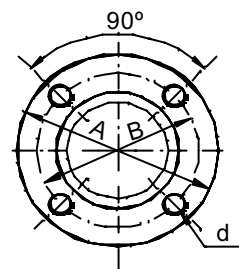


Fig. 5

SERIE SERIES	REFERENCIA PART NUMBER	Fig	A	B	C	d	L	R	$\beta^\circ$ max.
0500	1999D1-C	C - 5	58	47,0	30,0	5,1	147	65	18
	1999D2-C		65	52,0	35,0	6,1			
	1999D3-C	C - 6	75	62,0	42,0				
1.100	2001D1-C	C - 6	75	62,0	42,0	6,1	158	76	18
	2001D2-C	C - 5	90	74,5	47,0	8,1	160		
1.300	2003D-C	C - 5	90	74,5	47,0	8,1	194	92	20
	2003.1D-C	C - 6							
1.310	2015D-C	C - 5	90	74,5	47,0	8,1	197	97	20
	2015.1D-C	C - 6							
	2015D4-C	C - 6	100	84,0	57,0	8,1	200		
	2015DM-C	C - 7	120	101,5	75,0	10,1			
	2015D5-C								
1.350	2004D-C	C - 6	100	84,0	57,0	8,1	212	114	20
	2004D5-C	C - 7	120	101,5	75,0	10,1	227		
1.410	2005D-C	C - 7	120	101,5	75,0	10,1	232	122	20
	2005.1D-C					8,1			
1.480	2048D-C	C - 7	120	101,5	75,0	10,1	247	122	22
1.510	2006D-C	C - 7	120	101,5	75,0	10,1	257	136	22
	2006D7-C								
1.550	2055D-SC	C - 7	150	130,0	90,0	12,1	270	143	25
1.610	2007D-C	D - 7	150	130,0	90,0	12,1	294	160	22
1.710	2008D-C	D - 7	180	155,5	110,0	14,1	346	200	30
	2008D10-C	D - 8				16,1			
1.760	2076D-C	D - 7	180	155,5	110,0	16,1	343	205	30
	2076D10-C	D - 8							
1.800	2009D-C	D - 7	180	155,5	110,0	14,1	436	205	20
	2009D10-C	D - 8				16,1			
1.810	2081D-C	D - 7	180	155,5	110,0	16,1	352	217	20
	2081D10-C	D - 8							

JOCAR

## Juntas fijas SAE con acoplamientos SAE SAE Fixed Joints with SAE Flange fitting

JOCAR

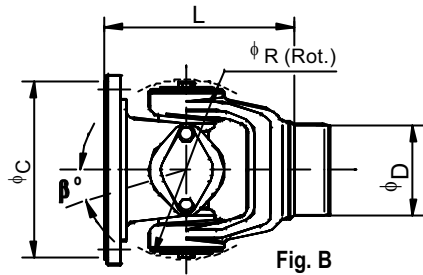


Fig. B

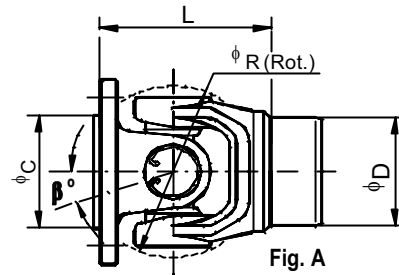


Fig. A

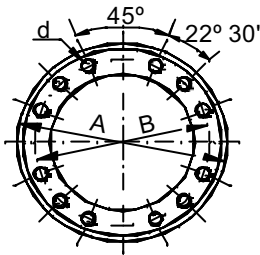


Fig. 4

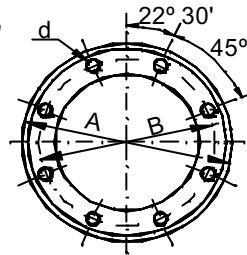


Fig. 3

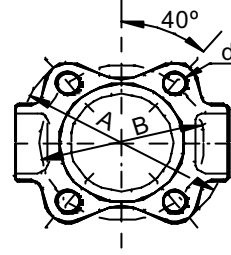


Fig. 2

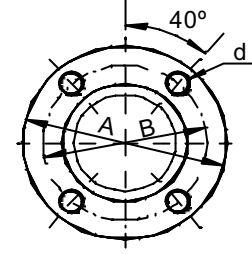


Fig. 1

SERIE SERIES	REFERENCIA PART NUMBER	Fig	A	B	C	d	L	D	R	$\beta^\circ$ max
0500	1999-F.32	A - 1	77,0	60,3	44,4	6,5	69,0	26,7	65	18
	1999-F.45						79,0	43,0		
1.100	2001-F.51	A - 1	88,0	69,9	57,1	8,1	67,0	46,2	76	18
	2001-F.57						72,0	53,0		
1.300	2003.1-F.51.1	A - 1	97,0	79,4	60,3	9,7	78,5	47,7	92	18
	2003-F.51					10,2		46,2		
	2003-F.63							58,6		
	2003-F.76							71,2		
1.310	2015.1-F.51.1	A - 1	97,0	79,4	60,3	9,7	80,0	47,7	97	20
	2015-F.51					10,2		46,2		
	2015.1A-F.51	A - 2				9,7	86,5		30	
	2015A-F.51					10,2				
1.350	2004-F.63	A - 2	118,0	95,3	69,9	11,2	97,0	58,6	114	20
	2004.2-F.63					12,1				
	2004-F.76					11,2		71,2		
	2004A-F.63	A - 1				127,0	58,6	29		
1.410	2005-F.63	A - 2	118,0	95,3	69,9	11,2	103,0	58,6	122	20
	2005-F.76						98,0	71,2		
	2005.2-F.76					12,1				
1.480	2048-F.90	A - 2	146,0	120,7	95,2	12,8	103,0	85,0	122	20
1.510	2006-F.76	A - 1	146,0	120,7	95,2	12,8	134,5	71,6	136	22
	2006.2-F.76					14,1				
	2006-F.90					12,8		84,3		
	2006.2-F.90					14,1				
1.610	2007.1-F.90	B - 3	174,6	155,5	168,2	9,7	155,0	84,5	160	22
	2007-F.90					10,2				
1.710	2008.1-F.90	B - 3	203,2	184,1	196,8	9,7	176,0	83,2	200	30
	2008-F.90					10,2				
	2008.12-F.90	B - 4				11,2				
1.760	2076-F.102	B - 4	203,2	184,1	196,8	11,2	161,0	94,9	205	20
1.800	2009-F.90	B - 4	203,2	184,1	196,8	11,2	174,0	80,0	205	20
1.810	2081-F.114	B - 4	203,2	184,1	196,8	11,2	171,5	101,7	217	20

JO CAR

## Juntas fijas SAE con acoplamientos DIN SAE Fixed Joints with DIN Flange fitting

JO CAR

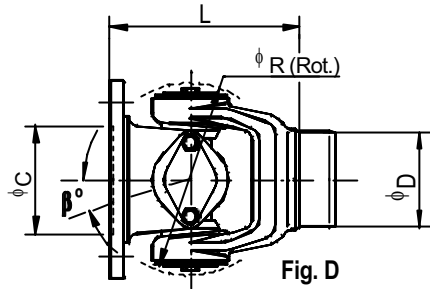


Fig. D

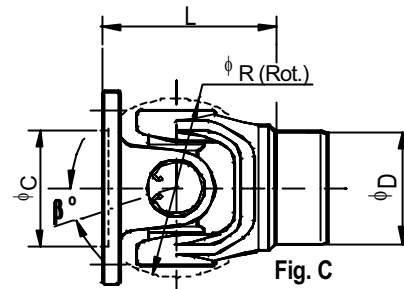


Fig. C

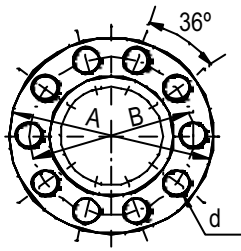


Fig. 8

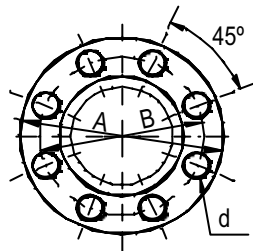


Fig. 7

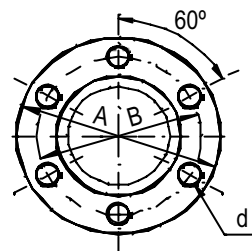


Fig. 6

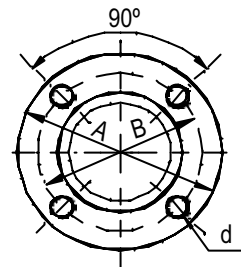
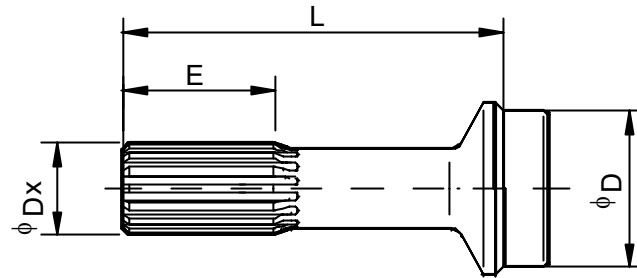


Fig. 5

SERIE SERIES	REFERENCIA PART NUMBER	Fig	A	B	C	d	L	D	R	$\beta^\circ$ max
0500	1999D1-F.32	C - 5	58	47,0	30,0	5,1	80,0	26,7	65	18
	1999D2-F.32		65	52,0	35,0	6,1		26,7		
	1999D3-F.45	C - 6	75	62,0	42,0	6,1	90,0	43,0		
1.100	2001D1-F.51	C - 6	75	62,0	42,0	6,1	75,5	46,2	76	18
	2001D2-F.51	C - 5	90	74,5	47,0	8,1	77,0			
1.300	2003D-F.51	C - 5	90	74,5	47,0	8,1	91,5	46,2	92	18
	2003.1D-F.51	C - 6								
1.310	2015D-F.51	C - 5	90	74,5	47,0	8,1	95,0	46,2	97	20
	2015D-F.63						99,0	58,6		
	2015.1D-F.51	C - 6	100	84,0	57,0	8,1	95,0	46,2	20	
	2015D4-F.51						98,0	46,2		
	2015D4-F.63	C - 7	120	101,5	75,0	10,1	102,0	58,6	20	
	2015DM-F.51						98,0	46,2		
	2015D5-F.63						101,5	58,6		
1.350	2004D-F.63	C - 6	100	84,0	57,0	8,1	112,0	58,6	114	20
	2004D-F.76							71,2		
	2004D5-F.63	C - 7	120	101,5	75,0	10,1	127,0	58,6		
1.410	2005D-F.76	C - 7	120	101,5	75,0	10,1	111,0	71,2	122	20
	2005.1D-F.76					8,1				
1.480	2048D-F.90	C - 7	120	101,5	75,0	10,1	116,5	85,0	122	20
1.510	2006D-F.76	C - 7	120	101,5	75,0	10,1	146,0	71,6	136	22
	2006D-F.90							84,3		
1.550	2055D-F.90	C - 7	150	130,0	90,0	12,1	135,0	84,3	143	25
1.610	2007D-F.90	D - 7	150	130,0	90,0	12,1	172,0	84,5	160	22
1.710	2008D-F.90	D - 7	180	155,5	110,0	14,1	186,5	83,2	200	30
1.760	2076D-F.102	D - 7	180	155,5	110,0	16,1	184,0	94,9	205	20
	2076D10-F.102									
1.800	2009D-F.90	D - 7	180	155,5	110,0	14,1	206,0	80,0	205	20
	2009D10-F.90	D - 8				16,1				
1.810	2081D-F.114	D - 7	180	155,5	110,0	16,1	178,0	101,7	217	20
	2081D10-F.114	D - 8								

JOCAR	<b>Barrones correderos SAE</b> <b>Slip Stub Shafts SAE</b>	JOCAR
-------	---	-------



SERIE SERIES	REFERENCIA PART NUMBER	$\phi D \times N^\circ$	L	E	D
0500	1999-B.32	SAE 1 1/16" Z-16	87	34	26,7
	1999-B.45				43,0
1.100	2001-B.51	SAE 1 1/16" Z-16	104	44	46,2
	2001-B.57				53,0
1.300	2003-B.51.1	SAE 1 3/8" Z-16	141	55	47,7
	2003-B.51				46,2
	2003-B.63.1				59,0
	2003-B.63				58,6
	2003-B.76				71,2
1.310	2015-B.51.1	SAE 1 3/8" Z-16	141	55	47,7
	2015-B.51				46,2
	2015R-B.51		160	59,0	
	2015-B.63.1		141		58,6
	2015-B.63				73,3
	2015-B.76.1				71,2
	2015-B.76				
1.350	2004-B.63.1	SAE 1 1/2" Z-16	147	63	59,0
	2004-B.63				58,6
	2004-B.76.1		145	61	73,3
	2004-B.76.2				71,6
	2004-B.76				71,2
1.410	2005-B.63.1	SAE 1 1/2" Z-16	147	63	59,0
	2005-B.63				58,6
	2005-B.76.2		160	76	71,6
	2005-B.76				71,2
	2005-B.90.0				84,3
1.480	2048-B.90	SAE 1 3/4" Z-16	163	75	84,3
1.510	2006-B.76.2	SAE 1 3/4" Z-16	163	75	71,6
	2006-B.76				71,2
	2006-B.90				84,3
1.550	2055-B.90R	SAE 1 3/4" Z-16	163	75	84,3
	2055M-B.90R	Ev. 46 Z-28	248	76	
	2055R-B.90R	SAE 1 3/4" Z-16	259	82	
1.610	2007-B.90	SAE 2" Z-16	197	90	84,5
	2007R-B.90		229		83,2
1.710	2008-B.90	SAE 2 1/2" Z-10	210	98	83,2
	2008M-B.90		238		
1.760	2076-B.102R	SAE 2 1/2" Z-16	235	102	95,2
	2076-BL.102R		268		
1.800	2009.10-B.90	SAE 3" Z-10	233	111	80,0
	2009.16-B.90	SAE 2 1/2" Z-16	245		
1.810	2081-B.114	SAE 3" Z-16	250	113	101,7
	2081-BL.114		286		

JOCAR	<b>Cruces de Cardan SAE Universal Joints SAE</b>	JOCAR
-------	--	-------

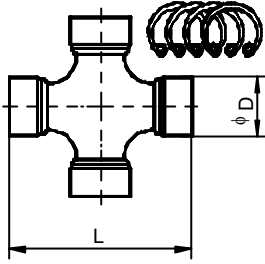


Fig. 1

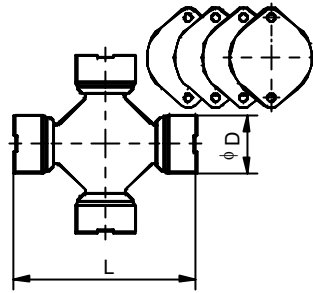


Fig. 2

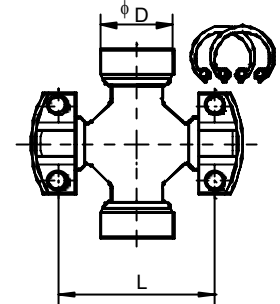


Fig. 3

SERIE SERIES	REFERENCIA PART NUMBER	Fig	D	L	CARACTERÍSTICAS CHARACTERISTICS
0500	1999-CR	1	19,1	51,9	ENGRASADOR CENTRAL-CENTRAL NIPPLE
1100	2001-CR	1	23,8	61,2	ENGRASADOR LATERAL-SIDE NIPPLE
	2001SE-CR				SIN ENGRASE-SEALED FOR LIFE-SANS
1210	2002SE-CR	1	27,0	61,9	(HYUNDAI) SIN ENGRASE-SEALED FOR LIFE
1300	2003-CR	1	27,0	74,6	ENGRASADOR LATERAL-SIDE NIPPLE
	2003SE-CR				SIN ENGRASE-SEALED FOR LIFE
1310	2015-CR	1	27,0	81,7	ENGRASADOR LATERAL-SIDE NIPPLE
	2015SE-CR				SIN ENGRASE-SEALED FOR LIFE
1330	2016-CR	1	27,0	92,1	ENGRASADOR LATERAL-SIDE NIPPLE
1350	2004-CR	1	30,2	92,0	ENGRASADOR LATERAL-SIDE NIPPLE
	2004SE-CR				SIN ENGRASE-SEALED FOR LIFE
1410	2005-CR	1	30,2	106,3	ENGRASADOR LATERAL-SIDE NIPPLE
1480	2048-CR	1	34,9	106,4	ENGRASADOR LATERAL-SIDE NIPPLE
	2048/50H-CR				COMBINACION-COMBINATION 1480/5C PERFIL ALTO-HIGH PROFILE
	2048/50L-CR				COMBINACION-COMBINATION 1480/5C PERFIL BAJO-LOW PROFILE
1510	2006-CR	1	39,7	115,9	ENGRASADOR LATERAL-SIDE NIPPLE
	2006T-CR	2			TAPAS SUELTAS-LOOSE PLATES
1550	2055-CR	1	34,9	127,0	ENGRASADOR LATERAL-SIDE NIPPLE
	2055/60H-CR	3	34,9	114,3	COMBINACION-COMBINATION 1550/6C PERFIL ALTO-HIGH PROFILE
	2055/60L-CR				COMBINACION-COMBINATION 1550/6C PERFIL BAJO-LOW PROFILE
1610	2007-CR	2	47,6	135,0	TAPAS SUELTAS-LOOSE PLATES
1630	2063-CR	1	39,7	115,9	ENGRASADOR LATERAL-SIDE NIPPLE
1650	2065-CR	1	41,3	142,5	ENGRASADOR LATERAL-SIDE NIPPLE
	2065/70-CR	3	41,3	117,5	COMBINACION-COMBINATION-COMBINATION 1650/7C
1710	2008-CR	2	49,2	154,7	TAPAS SUELTAS-LOOSE PLATES
1760	2076-CR	2	49,2	177,8	TAPAS SOLDADAS-WELDED PLATES
1800	2009-CR	2	59,0	167,5	TAPAS SUELTAS-LOOSE PLATES
1810	2081-CR	2	49,2	191,7	TAPAS SOLDADAS-WELDED PLATES
1880	2088-CR	1	55,6	205,6	ENGRASADOR LATERAL-SIDE NIPPLE
	2088T-CR	2	55,6	205,6	TAPAS SOLDADAS-WELDED PLATES
	2088/90-CR	3	55,6	168,3	COMBINACION-COMBINATION-COMBINATION 1880/9C
1900	2090-CR	2	71,5	223	TAPAS SOLDADAS-WELDED PLATES
1910	2091-CR	2	65,1	212,7	TAPAS SOLDADAS-WELDED PLATES
1950	2095-CR	1	77,8	255,1	ENGRASADOR CENTRAL-CENTRAL NIPPLE



JOCAR	<b>Platillos SAE con acoplamiento SAE</b> <b>SAE Flange Yokes SAE fitting</b>	JOCAR
-------	--	-------

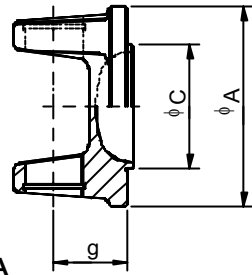


Fig. A

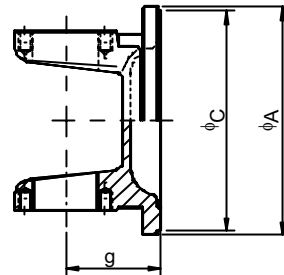


Fig. B

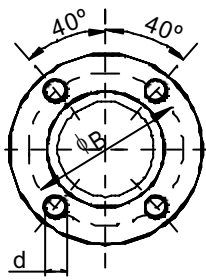


Fig.1

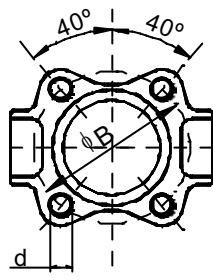


Fig. 2

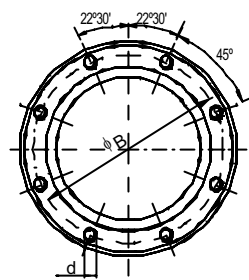


Fig. 3

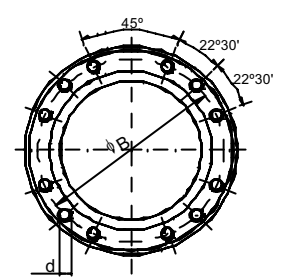


Fig. 4

SERIE SERIES	TAMAÑO DE CRUCETA UNIVERSAL JOINT SIZE	REFERENCIA PART NUMBER	Fig	A	B	C	d	TORNILLOS BOLTS	g	
0500	19,05 x 51,9	1999-SC	A - 1	77,0	60,32	44,45	6,5	4 x 1/4"	27,0	
		1999.2-SC					7,1	4 x M7		
1.100	23,8 x 61,2	2001.1-SC	A - 1	88,0	69,87	57,15	8,1	4 x 5/16"	30,2	
		2001-SC					8,2	4 x M8		
1.300	27,0 x 74,6	2003.1-SC	A - 1	97,0	79,39	60,32	9,7	4 x 3/8"	34,9	
		2003-SC					10,2	4 x M10		
1.310	27,0 x 81,7	2015.1R-SC	A - 1	88,0	69,87	57,15	8,2	4 x M8	47,0	
		2015.1-SC					A - 2	97,0		79,39
		2015-SC	A - 2	118,0	95,27	69,85		10,2	4 x M10	41,3
		2015.1A-SC					9,7	4 x 3/8"		
		2015A-SC					10,2	4 x M10		
2015.5-SC	11,2	4 x 7/16"	34,9							
1.350	30,18 x 92,0	2004.3-SC	A - 1	97,0	79,39	60,32	10,2	4 x M10	55,0	
		2004-SC	A - 2	118,0	95,27	69,85	11,2	4 x 7/16"		39,7
		2004.2-SC	A - 1				12,1	4 x M12		
		2004A-SC		11,2	4 x 7/16"	70				
1.410	30,18 x 106,3	2005-SC	A - 2	118,0	95,27	69,85	11,2	4 x 7/16"	42,9	
		2005.2-SC					12,1	4 X M12		
1.480	34,9 x 106,4	2048-SC	A - 2	146,0	120,67	95,25	12,8	4 x 1/2"	51,5	
1.510	39,7 x 115,9	2006-SC	A - 1	146,0	120,67	95,25	12,8	4 x 1/2"	63,5	
		2006.2-SC					14,1	4 x M14		
1.610	47,6 x 135,0	2007.1-SC	B - 3	174,6	155,52	168,2	9,7	8 x 3/8"	69,8	
		2007-SC					10,2	8x M10		
		2037.1-SC					B - 3	9,7	8x 3/8"	49,0
		2037-SC						10,2	8x M10	
1.710	49,9 x 154,7	2008.1-SC	B - 3	203,2	184,12	196,8	9,7	8 x 3/8"	76,2	
		2008-SC					B - 4	10,2		8 x M10
		2008.12-SC	B - 3					11,2	12 x 7/16"	56,0
		2038.1-SC					9,7	8 x 3/8"		
		2038-SC					10,2	8 x M10		
1.760	49,2 x 177,8	2076-SC	B - 4	203,2	184,12	196,8	11,2	12 x 7/16"	85,0	
1.800	59,0 x 167,5	2009-SC	B - 4	203,2	184,12	196,8	11,2	12 x 7/16"	86,0	
1.810	49,2 x 191,7	2081-SC	B - 4	203,2	184,12	196,8	11,2	12 x 7/16"	85,9	

JOCAR	<b>Platillos SAE con acoplamiento DIN</b> <b>SAE Flange Yokes DIN fitting</b>	JOCAR
-------	--	-------

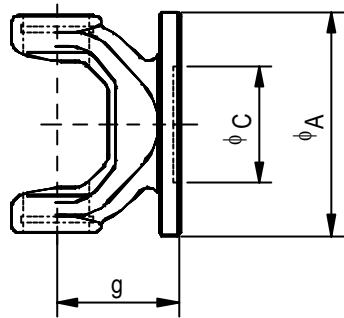


Fig. C

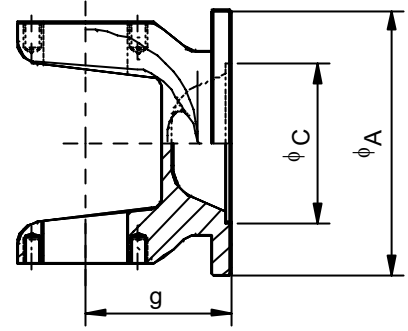


Fig. D

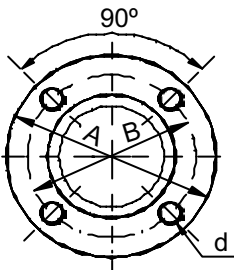


Fig.5

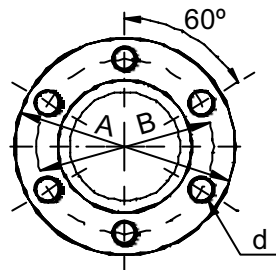


Fig. 6

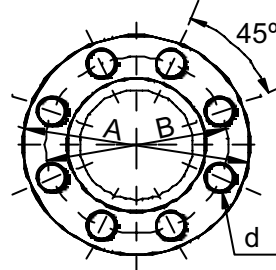


Fig. 7

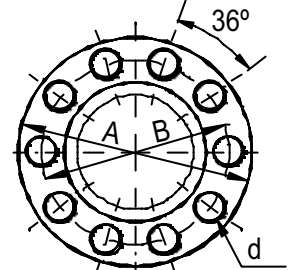


Fig. 8

SERIE SERIES	TAMAÑO DE CRUCETA UNIVERSAL JOINT SIZE	REFERENCIA PART NUMBER	Fig	A	B	C	d	TORNILLOS BOLTS	g
0500	19,05 x 51,9	1999D1-SC	C - 5	58	47,0	30,0	5,1	4 x M5	38,5
		1999D2-SC		65	52,0	35,0	6,1	4 x M6	
		1999D3-SC	C - 6	75	62,0	42,0	6,1	6 X M6	
1.100	23,8 x 61,2	2001D1-SC	C - 6	75	62,0	42,0	6,1	6 X M6	38,5
		2001D2-SC	C - 5	90	74,5	47,0	8,1	4 x M8	40,0
1.300	27,0 x 74,6	2003D-SC	C - 5	90	74,5	47,0	8,1	4 x M8	48,0
		2003DM-SC	C - 6				10,1	6 x M10	
1.310	27,0 x 81,7	2015D-SC	C - 5	90	74,5	47,0	8,1	4 x M8	50,0
		2015.1D-SC	C - 6					6 x M8	
		2015D4-SC	C - 6	100	84,0	57,0	8,1	6 x M8	
		2015DM-SC	C - 7					8 x M8	
		2015D5-SC	C - 7	120	101,5	75,0	10,1	8 x M10	
1.350	30,18 x 92,0	2004D-SC	C - 6	100	84,0	57,0	8,1	6 x M8	55,0
		2004DM-SC	C - 7					8 x M8	
		2004D5-SC	C - 7	120	101,5	75,0	10,1	8 x M10	
1.410	30,18 x 106,3	2005D-SC	C - 7	120	101,5	75,0	10,1	8 x M10	56,0
		2005.1D-SC					8,1	8 x M8	
1.480	34,9 x 106,4	2048M120-SC	(C - 6)	120	101,5	82,2 (M)	10,1	6 x M10	60,0
		2048M130-SC	(C - 7)	130	112,0	82,5 (M)		8 x M10	
		2048D-SC	C - 7	120	101,5	75,0		8 x M10	
1.510	39,7 x 115,9	2006D-SC	C - 7	120	101,5	75,0	10,1	8 x M10	75,0
		2006D7-SC		150	130,0	90,0	12,1	8 x M12	
1.550	34,9 x 127,0	2055D-SC	C - 7	150	130,0	90,0	12,1	8 x M12	80,0
1.610	47,6 x 135,0	2007D-SC	D - 7	150	130,0	90,0	12,1	8 x M12	87,0
1.710	49,9 x 154,7	2008D-SC	D - 7	180	155,5	110,0	14,1	8 x M14	86,5
1.760	49,2 x 177,8	2076D-SC	D - 7	180	155,5	110,0	16,1	8 x M16	108,0
		2076D10-SC	D - 8					10 x M16	
1.800	59,0 x 167,5	2009D-SC	D - 7	180	155,5	110,0	14,1	8 x M14	114,0
		2009D10-SC	D - 8				16,1	10 x M16	
1.810	49,2 x 191,7	2081D-SC	D - 7	180	155,5	110,0	16,1	8 x M16	92,0
		2081D10-SC	D - 8					10 x M16	

JOCAR	<b>Horquillas correderas SAE</b> <b>SAE Sleeve Yokes</b>	JOCAR
-------	---	-------

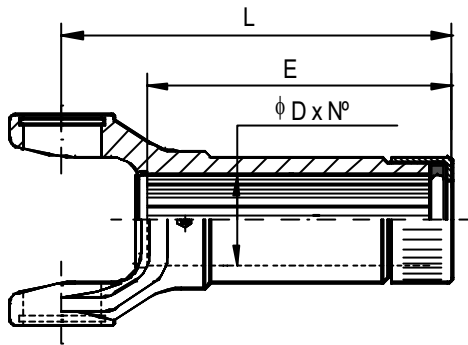


Fig. 1

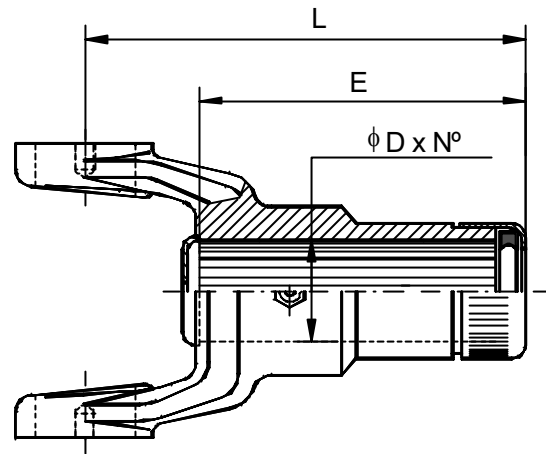


Fig. 2

SERIE SERIES	TAMAÑO DE CRUCETA UNIVERSAL JOINT SIZE	REFERENCIA PART NUMBER	Fig	L	E	D x N°
0500	19,05 x 51,9	1999-HC	1	109	82	SAE 1 1/16" Z-16
		1999.98-HC		98	69	
1.100	23,8 x 61,2	2001-HC	1	118	100	SAE 1 1/16" Z-16
		2001.82-HC		82	62	
1.300	27,0 x 74,6	2003-HC	1	146	123	SAE 1 3/8" Z-16
1.310	27,0 x 81,7	2015-HC	1	147	124	SAE 1 3/8" Z-16
		2015.123-HC		123	100	
		2015.109-HC		109	86	
		2015A.175-HC		175	139	
		2015R70-HC		165	141	
1.350	30,18 x 92,0	2004-HC	1	157	127	SAE 1 1/2" Z-16
		2004.127-HC		127	97	
1.410	30,18 x 106,3	2005-HC	1	176	150	SAE 1 1/2" Z-16
		2005.112-HC		112	86	
1.480	34,9 x 106,4	2048-HC	1	182	150	SAE 1 3/4" Z-16
1.510	39,7 x 115,9	2006-HC	1	183	138	SAE 1 3/4" Z-16
		2006.124-HC		124	79	
1.550	34,9 x 127,0	2055-HC	1	175	140	SAE 1 3/4" Z-16
		2055M-HC		280	222	Ev. 46 Z-28
		2055R-HC				SAE 1 3/4" Z-16
1.610	47,6 x 135,0	2007-HC	2	207	155	SAE 2" Z-16
		2007R-HC		258	197	
		2037-HH		103	74	
1.630	39,7 x 115,9	2063-HC	1	276	207	SAE 2" Z-16
1.710	49,9 x 154,7	2008-HC	2	260	181	SAE 2 1/2" Z-10
		2008M-HC		292	213	
		2038.1-HH		115	80	81,5 Z-16
		2038.2-HH		143	108	
1.760	49,2 x 177,8	2076-HC	2	235	172	SAE 2 1/2" Z-16
		2076-HCL		283	234	
1.800	59,0 x 167,5	2009.10-HC	2	322	196	SAE 3" Z-10
		2009.16-HC		340	200	SAE 2 1/2" Z-16
1.810	49,2 x 191,7	2081-HC	2	261	200	SAE 3" Z-16
		2081-HCL		302	241	

JOCAR	<b>Horquillas fijas SAE SAE Tube Yokes</b>	
-------	--	--

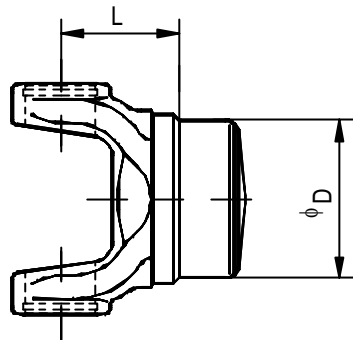


Fig. 1

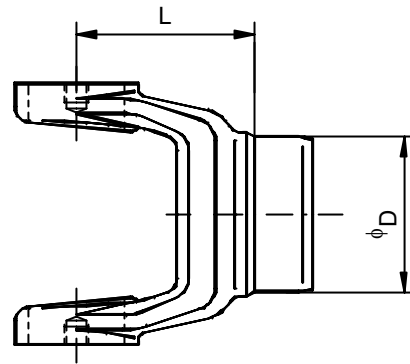


Fig. 2

SERIE SERIES	TAMAÑO DE CRUCETA UNIVERSAL JOINT SIZE	REFERENCIA PART NUMBER	Fig.	L	D	CARACTERÍSTICAS CHARACTERISTICS	
0500	19,05 x 51,9	1999-HF.32	1	42,0	26,7	Maciza-Solid base	
		1999-HF.45		52,0	43,0		
1.100	23,8 x 61,2	2001-HF.51	1	37,0	46,2	Maciza-Solid base	
		2001-HF.57		42,0	53,0		
1.300	27,0 x 74,6	2003-HF.51.1	1	43,5	47,7	Maciza-Solid base	
		2003-HF.51			46,2		
		2003-HF.63.1			59,0		
		2003-HF.63			58,6		
		2003-HF.76.1			73,3		
		2003-HF.76			71,2		
1.310	27,0 x 81,7	2015-HF.51	1	43,0	46,2	20° / Hueca-Hollowed	
		2015A-HF.51.1		45,0	47,7	30° / Maciza-Solid base	
		2015A-HF.51			46,2		
		2015-HF.63.1		49,0	59,0		
		2015-HF.63			58,6		
		2015-HF.76.1		43,0	73,3	20°/Hueca-Hollowed	
		2015A-HF.76		55,0	71,6	30°/Maciza-Solid base	
1.350	30,18 x 92,0	2004-HF.63.1	1	57,0	59,0	Maciza-Solid base	
		2004-HF.63			58,6		
		2004-HF.76.1			73,3		
		2004-HF.76.2			71,6		
		2004-HF.76			71,2		
1.410	30,18 x 106,3	2005-HF.63.1	1	60,0	59,0	Maciza-Solid base	
		2005-HF.63			58,6		
		2005-HF.76			55,0	71,2	Hueca-Hollowed
		2005-HF.76.2			54,0	71,6	
		2005-HF.90.0				84,3	
1.480	34,9 x 106,4	2048-HF.90	1	51,5	85,0	Hueca-Hollowed	
1.510	39,7 x 115,9	2006-HF.76.2	1	71,0	71,6	Hueca-Hollowed	
		2006-HF.90			84,3		
1.550	34,9 x 127,0	2055-HF.90	1	55,5	84,3	Hueca-Hollowed	
		2055A-HF.90		67,5			
1.610	47,6 x 135,0	2007-HF.90	2	85,0	84,5	Maciza-Solid base	
1.630	39,7 x 115,9	2063-HF.90	1	71,0	84,3	Hueca-Hollowed	
1.710	49,9 x 154,7	2008-HF.90	2	100,0	83,2	Hueca-Hollowed	
1.760	49,2 x 177,8	2076-HF.102	2	76,0	94,9	Hueca-Hollowed	
1.800	59,0 x 167,5	2009-HF.90	2	92,0	80,0	Hueca-Hollowed	
1.810	49,2 x 191,7	2081-HF.114	2	85,9	101,7	Hueca-Hollowed	



JOCAR TRANSMISIONES S.L.

c/Lezeaga, 4 48002 Bilbao

Tlf 94 427 53 40 Fax 94 427 54 93

www.jocartransmisiones.com

e-mail: jocar@jocartransmisiones.com

JOCAR

## Horquillas-eje SAE Yoke-shafts SAE

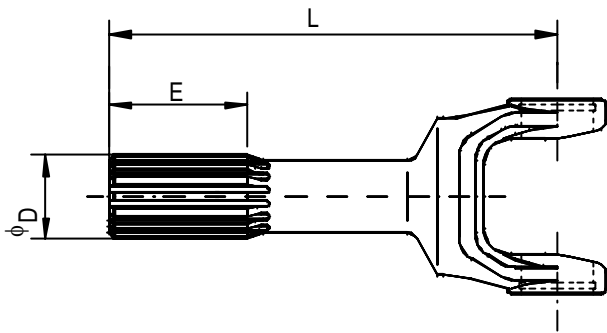


Fig.1

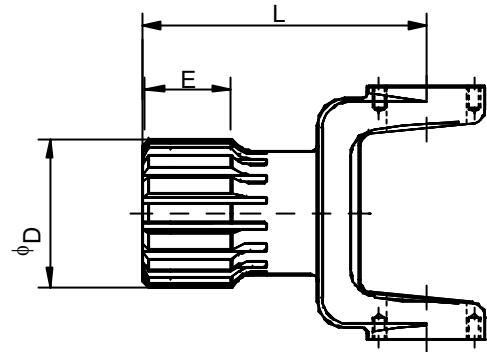


Fig.2

SERIE SERIES	REFERENCIA PART NUMBER	Fig	$\phi$ D x N°	L	E
0500	1999-HFB.104	1	SAE 1 1/16" Z-16	104	30
	1999-HFB.150			150	35
1.100	2001-HFB.95	1	SAE 1 1/16" Z-16	95	32
	2001-HFB.112			112	41
1.300	2003-HFB.137	1	SAE 1 3/8" Z-16	137	53
1.310	2015-HFB.127	1	SAE 1 3/8" Z-16	127	48
	2015-HFB.143			143	
	2015-HFB.171			171	60
	2015-HFB.190			190	
	2015-HFB.197			197	
1.350	2004-HFB.155	1	SAE 1 1/2" Z-16	155	57
	2004-HFB.170			170	65
	2004-HFB.191			191	70
	2004-HFB.217			217	
1.410	2005-HFB.126	1	SAE 1 1/2" Z-16	126	51
	2005-HFB.145			145	
	2005-HFB.168			168	60
1.480	2048-HFB.144R	1	SAE 1 3/4" Z-16	144	51
	2048-HFB.185R			185	58
1.510	2006-HFB.150	1	SAE 1 3/4" Z-16	150	55
	2006-HFB.170			170	66
1.550	2055-HFB.116	1	SAE 2 1/2" Z-16	116	40
	2055-HFB.173R		SAE 1 3/4" Z-16	173	63
	2055-HFB.238R		SAE 1 3/4" Z-16	238	76
	2055-HFB.300R		SAE 2" Z-16	300	89
1.610	2037-HM	2	65 Z-16	122	45
	2007-HFB.200		SAE 2" Z-16	200	70
1.710	2038-HM	2	81,5 Z-16	133	49

- Tanto las horquillas-eje, como los barrones correderos se pueden suministrar "rilsanzados".



JOCAR TRANSMISIONES S.L.

c/Lezeaga, 4 48002 Bilbao

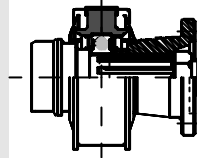
Tlf 94 427 53 40 Fax 94 427 54 93

www.jocartransmisiones.com

e-mail: jocar@jocartransmisiones.com

JO CAR

## Puentes centrales SAE SAE Centre Bearing Assemblies



COMPONENTES COMPONENTS	SERIE SERIES	REFERENCIA PART NUMBER	D	L	H	C
	1300 / 1310	2015.35-SBF	35	168	57	19
	1350 / 1410	2005.40-SBF	40	168	63	27
	1510	2006.45-SBF	45	194	69	19
	1610	2007.45-SBF	45	194	69	27
	1710	2008.50-SBF	50	194	71	30
	1300 / 1310	2015.35-BP.51	46,2	92,0	60,0	35
		2015.35-BP.63.0	60,5	92,0	60,0	35
		2015.35-BP.76	73,3	102,0	70,0	35
	1350 / 1410	2005.40-BP.63	58,6	105,5	75,5	40
		2005.40-BP.76.2	71,6	105,5	75,5	40
	1510	2006.45-BP.90	83,3	109,5	74,5	45
	1710	2008.50-BP.90	85,0	138,2	106,5	50
	1300 / 1310	2015.35-BR	10,2	60,7	36,0	60,4
		2015.1.35-BR	9,7	60,7	36,0	60,4
	1350 / 1410	2005.40-BR	11,2	68,3	51,0	69,9
		2005.2.40-BR	12,1	68,3	51,0	69,9
	1510	2006.45-BR	12,8	66,0	57,0	95,3
		2006.2.45-BR	14,1	66,0	51,0	95,3
	1610	2007.45-BR	10,2	79,6	59,0	168,3
		2007.1.45-BR	9,7	79,6	59,0	168,3
	1710	2008.50-BR	10,2	95,0	78,0	197,0
		2008.1.50-BR	9,7	95,0	78,0	197,0
	1350	2004D.35-BR	8,1	69,1	54,5	57,0
		2004D.40-BR	8,1	68,0	51,0	57,0
	1410	2005D.35-BR	8,1	69,1	54,5	75,0
		2005D.40-BR	10,1	68,3	51,0	75,0
		2005D.45-BR	10,1	73,0	58,0	75,0
	1510	2006D.45-BR	10,1	73,0	58,0	75,0
	<b>SAE</b>					
	<b>DIN</b>					



JO CAR TRANSMISIONES S.L.

c/Lezeaga, 4 48002 Bilbao

Tlf 94 427 53 40 Fax 94 427 54 93

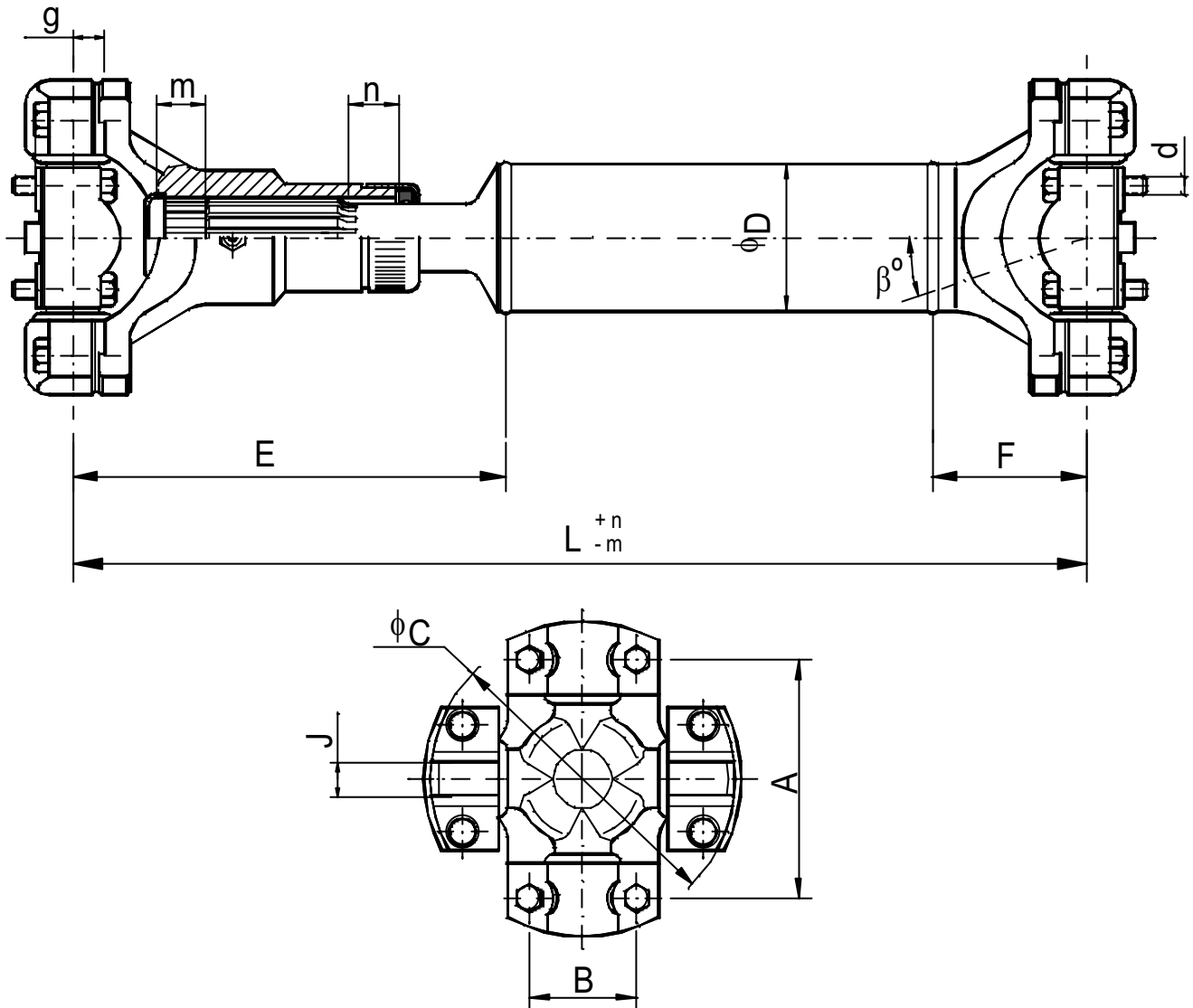
www.jocartransmisiones.com

e-mail: jocar@jocartransmisiones.com

JOCAR

## Transmisiones tipo " M "

### Drive Shafts type " M "



Rec = Recorrido - Slip movement

SERIE SERIES	REFERENCIA PART NUMBER	E	F	Rec + n - m	D	A	B	J	C	d	g	$\beta^\circ$ max
2C	3020.50-T.L CDR	183	40	+ - 22	50	60,62	33,27	9,52	79,25	7x1	14,7	20
3C	3030.50-T.L CDR	185	47	+ - 22	50	69,90	36,57	9,52	90,42	7x1	14,7	20
4C	3040.50-T.L CDR	220	48	+ - 25	50	87,32	36,57	9,52	107,95	5/16"	15,5	20
5C	3050.60-T.L CDR	226	48	+ - 28	60	88,90	42,92	14,26	115,06	3/8"	17,5	24
6C	3060.76-T L CDR	238	55	+ - 35	76	114,30	42,92	14,26	140,46	3/8"	18,5	24
7C	3070.90-T.L CDR	265	55	+ - 35	90	117,50	49,27	15,85	148,38	1/2"	20,0	24
8C	3080.90-T.L CDR	326	87	+ - 40	90	174,60	49,27	15,85	206,32	1/2"	22,0	30
8,5C	3085.100-T.L CDR	346	101	+ - 37	100	123,83	71,37	15,85	165,10	1/2"	25,4	25
9C	3090.115-T.L CDR	381	89	+ - 37	115	168,28	71,38	15,85	209,55	1/2"	25,4	30
10C	3100.125-T.L CDR	387	109	+ - 42	125	165,10	91,95	25,35	212,85	5/8"	32,6	25



JOCAR TRANSMISIONES S.L.

c/Lezeaga, 4 48002 Bilbao

Tlf 94 427 53 40 Fax 94 427 54 93

www.jocartransmisiones.com

e-mail: jocar@jocartransmisiones.com



J O C A R	<b>Componentes para Transmisiones Tipo "M"</b> <b>Components for Drive Shafts Type "M"</b>
-----------	---

DENOMINACIÓN DENOMINATION	SERIE SERIES	REFERENCIA PART NUMBER	A	B	E	C	d <sub>1</sub>	d <sub>2</sub>
<p>CRUZ U/JOINT CROISILLON</p>	2 C	3020.RR-CR 3020.PP-CR	60,32	33,27	9,52	79,25	5/16"-24 8,75	5/16"-24 5/16"-24
	3 C	3030.RR-CR	69,90	36,57	9,52	90,42	5/16"-24	5/16"-24
	4 C	3040.RR-CR 3040.PP-CR 3040.PR-CR	87,32	36,57	9,52	107,95	5/16"-24 8,75 8,75	5/16"-24 8,75 5/16"-24
	5 C	3050.RR-CR 3050.PP-CR 3050.PR-CR	88,90	42,92	14,26	115,06	3/8"-24 10,50 10,50	3/8"-24 10,50 3/8"-24
	6 C	3060.RR-CR 3060.PP-CR 3060.PR-CR	114,30	42,92	14,26	140,46	3/8"-24 10,5 10,5	3/8"-24 10,5 3/8"-24
	7 C	3070.RR-CR 3070.PP-CR 3070.PR-CR	117,50	49,27	15,85	148,38	1/2"-20 13,50 13,50	1/2"-20 13,50 1/2"-20
	8 C	3080.RR-CR 2031-CR	174,60	49,27	15,85	206,32	1/2"-20	1/2"-20
	8.5 C	3085.RR-CR	123,83	71,37	15,85	165,10	1/2"-20	1/2"-20
	9 C	3090.PP-CR	168,28	71,37	15,85	209,55	13,50	13,50
	"Pegaso"	2032-CR	174,60	55,00	15,85	206,32	1/2"-20	1/2"-20

SERIE	REFERENCIA	D	L
-------	------------	---	---

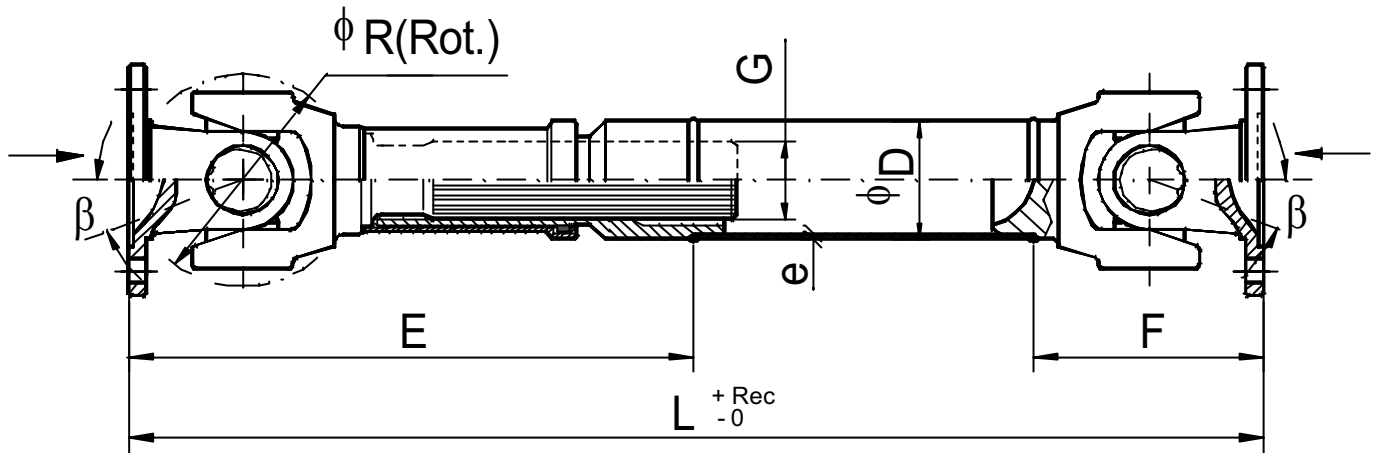
### CONJUNTOS DESLIZANTES - SLIDING ASSEMBLIES

	6 C	3060-CB.76	71,6	185,0
	7 C	3070-CB.90	84,3	210,0
	8 C	2031-CBL.90	83,5	263,0
	"Pegaso"	2032-CBL.90	83,5	263,0

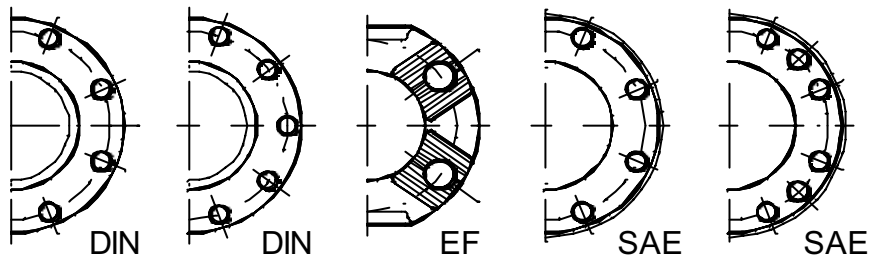
### HORQUILLAS FIJAS - TUBE YOKES

	6 C	3060-F.76	71,6	37,0
	7 C	3070-F.90	84,3	35,0
	8 C	2031-F.90	83,5	65,0
	"Pegaso"	2032-F.90	83,5	65,0

JOCAR	<b>Transmisiones versión DIN</b> <b>Drive Shafts DIN version</b>
-------	---



→  
Páginas 31 y 32  
Pages 31 & 32



←  
Páginas 31 y 32  
Pages 31 & 32

Serie - Series		3515	3520	3530	3535	3542			3545	3548
Diám rotación de la junta Joint swing diameter	$\phi R$	125	138	156	168	178			196	204
Tubo Tube	D x e	80x3,5	85x5	88x4,5	100x6	110x6	120x6	140x5	140x5	140x5
Ángulo máximo Max.deflection angle	$\beta^\circ$	35°	35°	35°	35°	25°			25°	25°
Longitud mínima Min.length	L	630	670	700	750	800	620	800	650	800
Recorrido Slip	Rec.	110	110	110	110	150	110	160	110	150
Longitud junta fija Fixed joint length	F	159	155 171	189	203 183	211 216	195 200	203 208	220 210	225 215
Longitud junta corredera Slip joint length	E	374	382 398	420	448 428	500 505	382 387	495 500	465 455	523 513
Estriado DIN 5480 Spline DIN 5480	G	52x2,5	55x2,5	65x2,5	75x2,5	80x2,5	95x2,5	80x2,5	75x2,5	90x2,5



JOCAR TRANSMISIONES S.L.

c/Lezeaga, 4 48002 Bilbao

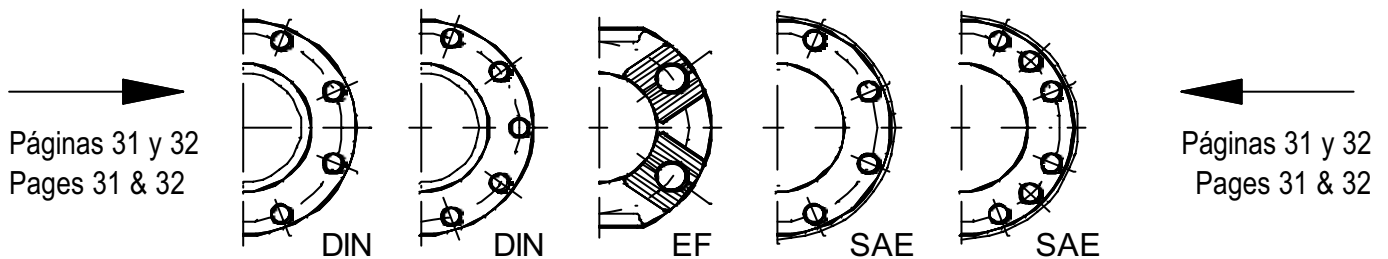
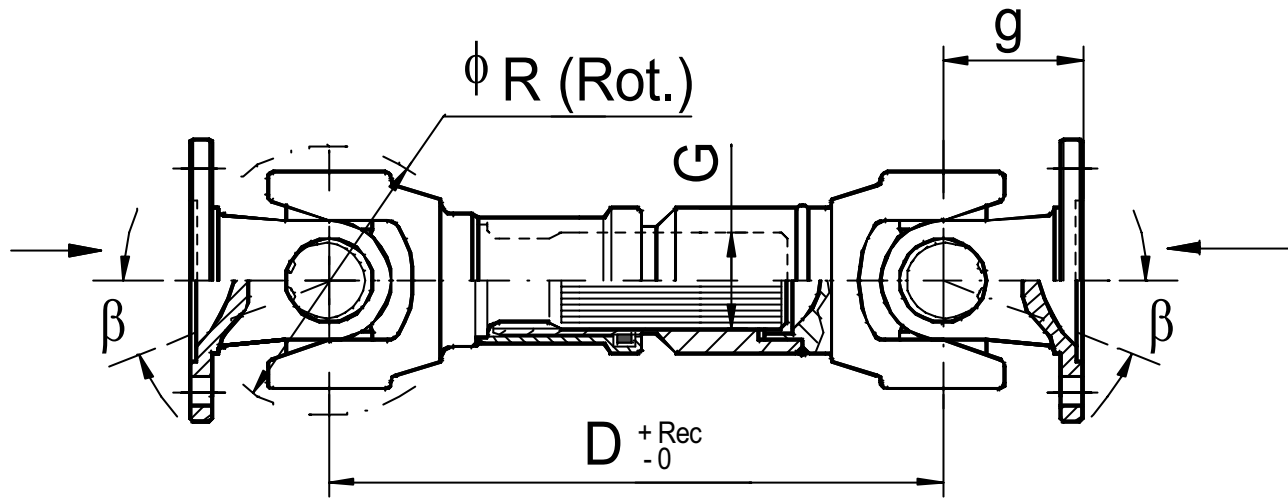
Tlf 94 427 53 40 Fax 94 427 54 93

www.jocartransmisiones.com

e-mail: jocar@jocartransmisiones.com

JOCAR

## Cardancillos versión DIN Short Coupled Shafts DIN version



Serie – Series		3515	3520	3530	3535	3542	3548
Diám rotación de la junta Joint swing diameter	R	125	138	156	168	178	204
Ángulo de inclinación máximo Max.deflection angle	$\beta^\circ$	35°	35°	35°	35°	25°	25°
Longitud del platillo Flange Yoke length	g	Ver Páginas 31 y 32 See Pages 31 and 32					
Longitud entre centros cerrada Centre-centre closed length	D	300	330	360	385	390	380
Recorrido Slip	Rec.	60	70	80	80	65	45
Estriado DIN 5480 Spline DIN 5480	G	52x2,5	55x2,5	65x2,5	75x2,5	80x2,5	90x2,5



JOCAR TRANSMISIONES S.L.

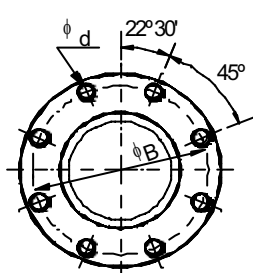
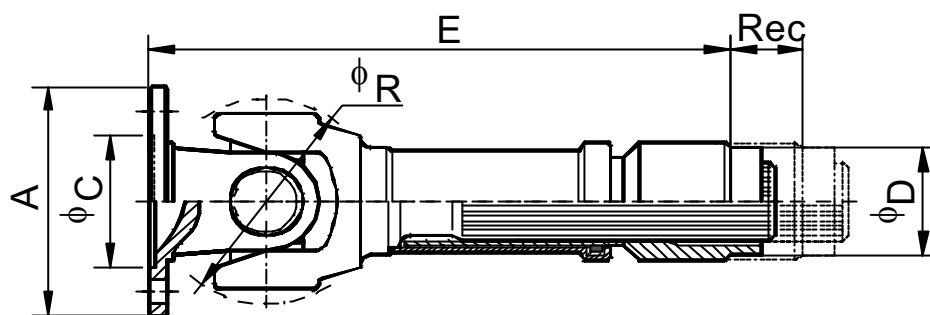
c/Lezeaga, 4 48002 Bilbao

Tlf 94 427 53 40 Fax 94 427 54 93

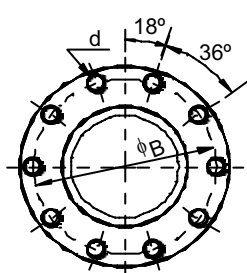
www.jocartransmisiones.com

e-mail: jocar@jocartransmisiones.com

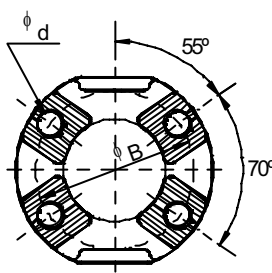
JOCAR	<b>Juntas correderas versión DIN</b> <b>Slip Joints DIN version</b>	<b>(1)</b>	JOCAR
-------	--	------------	-------



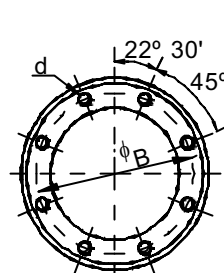
DIN Fig. 1



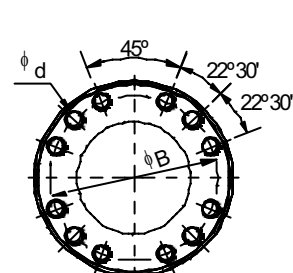
DIN Fig. 2



EF Fig. 3



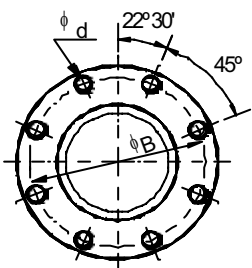
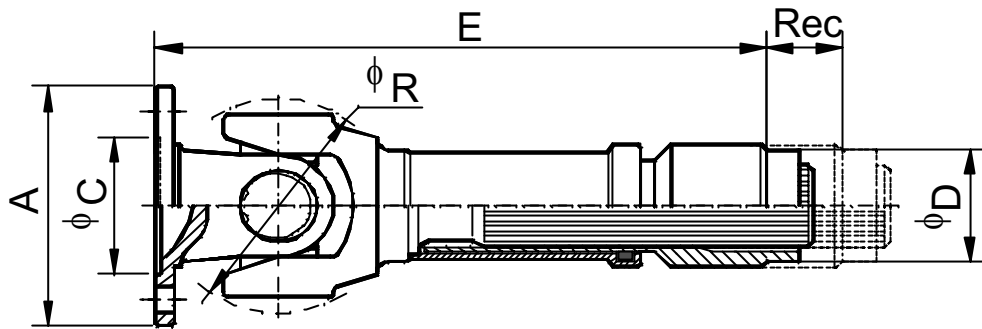
SAE Fig. 4



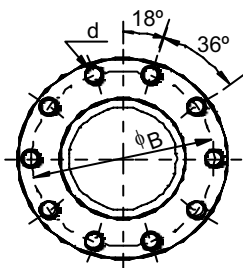
SAE Fig. 5

SERIE SERIES	CRUZ U/JOINT	REFERENCIA PART NUMBER	Fig.	A	B	C	d	E	Rec	D	$\phi R$	$\beta^\circ$
3515	42,0 x 104,5	3515.1-CB	1	120	101,5	75,0	10	374	110	73,4	125	35°
		3515.2-CB					12					
		3515.5-CB	3	122	100,0	-	11					
3520	48,0 x 116,5	3520.1-CB	1	150	130,0	90,0	12	398	110	75,4	138	35°
		3520.3-CB	3	150	130,0	-	13					
		3520.4-CB	4	175	155,5	168,2	9,7					
		3520.5-CB	1	180	155,5	110,0	14					
3530	52,0 x 133,0	3530.1-CB	1	150	130,0	90,0	12	420	110	79,4	156	35°
		3530.2-CB		165	140,0	95,0	14					
		3530.3-CB		165	140,0	95,0	16					
		3530.4-CB		180	155,5	110,0	14					
		3530.5-CB		16								
		3530.6-CB	2									
		3530.7-CB	3	150	130,0	-	13					
		3530.8-CB		180	150,0	-	15					
		3530.9-CB	5	203	184,2	196,8	10					
3535	57,0 x 144,0	3535.1-CB	1	165	140,0	95,0	16	448	110	88,4	168	35°
		3535.2-CB		180	155,5	110,0	14					
		3535.3-CB		16								
		3535.4-CB	2									
		3535.5-CB	3	180	150,0	-	15					
		3535.6-CB	5	203	184,2	196,8	10					
		3535.7-CB		11								
		3535.8-CB	3	150	130,0	-	13					
		3535.9-CB	5	203	184,2	196,8	11					428

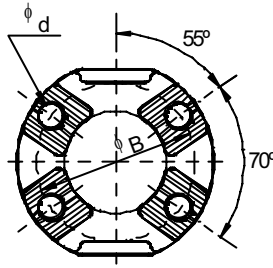
JOCAR	<b>Juntas correderas versión DIN</b> <b>Slip Joints DIN version</b>	<b>(2)</b>	JOCAR
-------	--	------------	-------



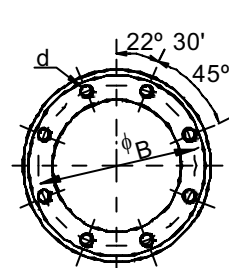
DIN Fig. 1



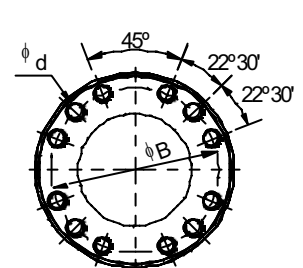
DIN Fig. 2



EF Fig. 3



SAE Fig. 4



SAE Fig. 5

SERIE SERIES	CRUZ U/JOINT	REFERENCIA PART NUMBER	Fig.	A	B	C	d	E	Rec	D	$\phi$ R	$\beta^\circ$			
3542	57,0 x 152,0	3542.1-CB.110	1	180	155,5	110,0	16	500	150	98,0	178	25°			
		3542.1-CB.120											382	110	108,4
		3542.1-CB.140											495	150	130,4
		3542.2-CB.110	2					500					98,0		
		3542.2-CB.120						382	110				108,4		
		3542.2-CB.140						495	150				130,4		
		3542.3-CB.110	3					500					98,0		
		3542.3-CB.120						382	110				108,4		
		3542.3-CB.140						495	150				130,4		
		3542.4-CB.110	5					505					98,0		
		3542.4-CB.120						387	110				108,4		
		3542.4-CB.140						500	150				130,4		
		3542.5-CB.110	1					505					98,0		
3542.5-CB.120	387	110		108,4											
3542.5-CB.140	500	150		130,4											
3545	57,0 x 172,0	3545.1-CB	2	180	155,5	110,0	16	465	110	130,4	196	25°			
		3545.2-CB	3	180	150,0	-	15	455							
3548	65,0 x 172,0	3548.1-CB	2	180	155,5	110,0	16	523	150	130,4	204	25°			
		3548.2-CB	1	225	196,0	140,0	16								
		3548.3-CB		250	218,0	18									
		3548.4-CB		3	180	150,0	-						15	513	



JOCAR TRANSMISIONES S.L.

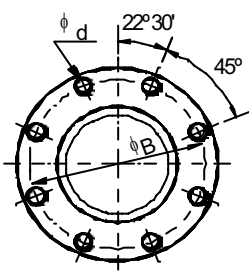
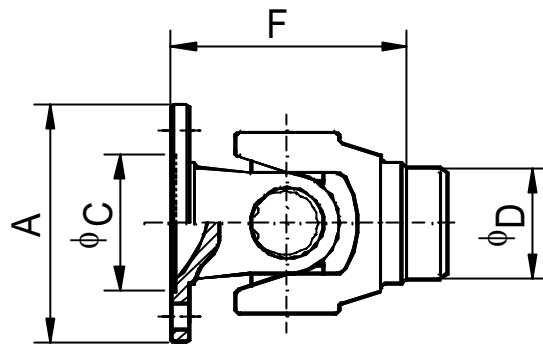
c/Lezeaga, 4 48002 Bilbao

Tlf 94 427 53 40 Fax 94 427 54 93

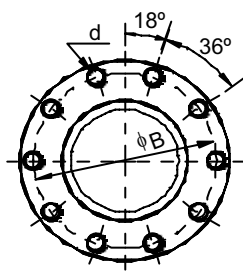
www.jocartransmisiones.com

e-mail: jocar@jocartransmisiones.com

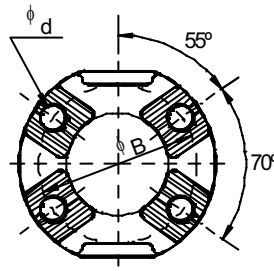
JOCAR	<b>Juntas fijas versión DIN</b> <b>Fixed Joints DIN version</b>	<b>(1)</b>	JOCAR
-------	--	------------	-------



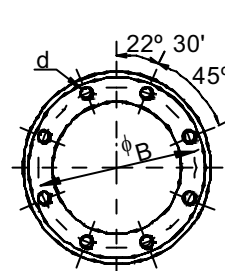
DIN Fig. 1



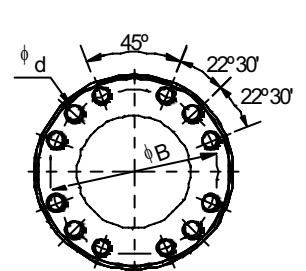
DIN Fig. 2



EF Fig. 3



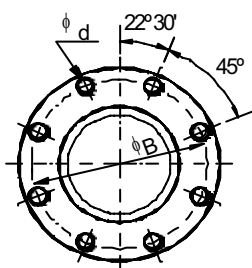
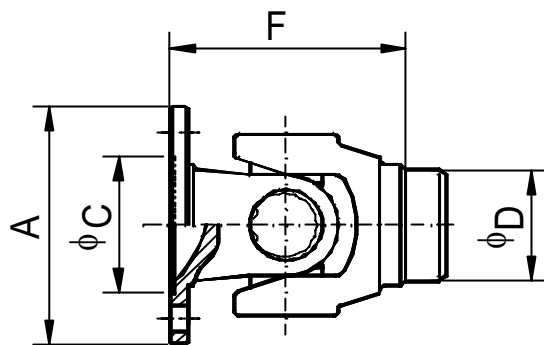
SAE Fig. 4



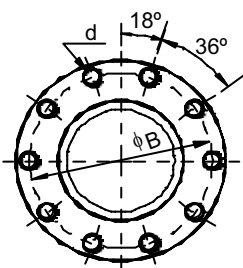
SAE Fig. 5

SERIE SERIES	CRUZ U/JOINT	REFERENCIA PART NUMBER	Fig.	A	B	C	d	F	D	ϕ R	β°
3515	42,0 x 104,5	3515.1-F	1	120	101,5	75,0	10	159	73,4	125	35°
		3515.2-F					12				
		3515.5-F	3	122	100,0	-	11				
3520	48,0 x 116,5	3520.1-F	1	150	130,0	90,0	12	171	75,4	138	35°
		3520.3-F	3	150	130,0	-	13				
		3520.4-F	4	175	155,5	168,2	9,7				
		3520.5-F	1	180	155,5	110,0	14				
3530	52,0 x 133,0	3530.1-F	1	150	130,0	90,0	12	189	79,4	156	35°
		3530.2-F		165	140,0	95,0	14				
		3530.3-F					16				
		3530.4-F		180	155,5	110,0	14				
		3530.5-F					16				
		3530.6-F	2								
		3530.7-F	3	150	130,0	-	13				
		3530.8-F		180	150,0		15				
		3530.9-F	5	203	184,2	196,8	10				
3535	57,0 x 144,0	3535.1-F	1	165	140,0	95,0	16	203	88,4	168	35°
		3535.2-F		180	155,5	110,0	14				
		3535.3-F					16				
		3535.4-F	2								
		3535.5-F	3	180	150,0	-	15				
		3535.6-F	5	203	184,2	196,8	10				
		3535.7-F					11				
		3535.8-F	3	150	130,0	-	13				
		3535.9-F	5	203	184,2	196,8	11				

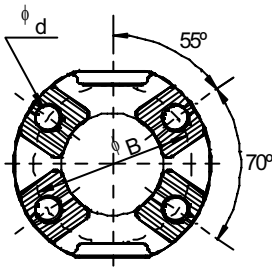
JOCAR	<b>Juntas fijas versión DIN</b> <b>Fixed Joints DIN version</b>	(2)	JOCAR
-------	--	-----	-------



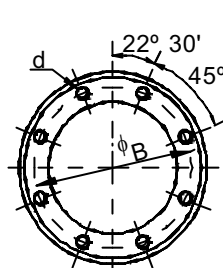
DIN Fig. 1



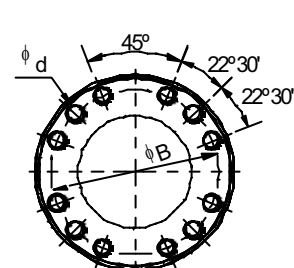
DIN Fig. 2



EF Fig. 3



SAE Fig. 4



SAE Fig. 5

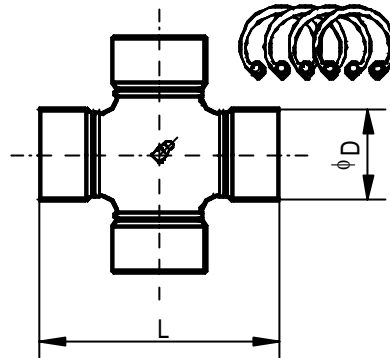
SERIE SERIES	CRUZ U/JOINT	REFERENCIA PART NUMBER	Fig.	A	B	C	d	F	D	ϕ R	β°																		
3542	57,0 x 152,0	3542.1-F.110	1	180	155,5	110,0	16	211	98,0	178	25°																		
		3542.1-F.120										195	108,4																
		3542.1-F.140										203	130,0																
		3542.2-F.110	2						180			150,0	-	15	211	98,0													
		3542.2-F.120															195	108,4											
		3542.2-F.140															203	130,0											
		3542.3-F.110	3													203	184,2	196,8	11	216	98,0								
		3542.3-F.120																				195	108,4						
		3542.3-F.140																				203	130,0						
		3542.4-F.110	5																	225	196,0	140,0	16	216	98,0				
		3542.4-F.120																								200	108,4		
		3542.4-F.140																								208	130,0		
		3542.5-F.110	1																					180	150,0	-	15	216	98,0
		3542.5-F.120																											
3542.5-F.140	208	130,4																											
3545	57,0 x 172,0	3545.1-F	2	180	155,5	110,0	16	220		130,4	196																	25°	
		3545.2-F	3	180	150,0	-	15	210																					
3548	65,0 x 172,0	3548.1-F	2	180	155,5	110,0	16	225	130,4	204	25°																		
		3548.2-F										1	225	196,0	140,0													16	
		3548.3-F	250										218,0	18															
		3548.4-F	3										180	150,0	-	15	215												



JOCAR

## Cruces de Cardan DIN DIN Universal Joints

JOCAR



SERIE SERIES	REFERENCIA PART NUMBER	D	L	CARACTERÍSTICAS CHARACTERISTICS
3515	3515-CR	42,0	104,5	ENGRASADOR CENTRAL-CENTRAL NIPPLE
3520	3520-CR	48,0	116,5	ENGRASADOR CENTRAL-CENTRAL NIPPLE
	3520SE-CR			SIN MANTENIMIENTO - LIFETIME VERSION
3530	3530-CR	52,0	133,0	ENGRASADOR CENTRAL-CENTRAL NIPPLE
	3530SE-CR			SIN MANTENIMIENTO - LIFETIME VERSION
	3530AT-CR			ALTAS TEMPERATURAS-HIGH TEMPERATURES
3535	3535-CR	57,0	144,0	ENGRASADOR CENTRAL-CENTRAL NIPPLE
	3535SE-CR			SIN MANTENIMIENTO - LIFETIME VERSION
	3535AT-CR			ALTAS TEMPERATURAS-HIGH TEMPERATURES
3542	3542-CR	57,0	152,0	ENGRASADOR CENTRAL-CENTRAL NIPPLE
	3542SE-CR			SIN MANTENIMIENTO - LIFETIME VERSION
3545	3545-CR	57,0	172,0	ENGRASADOR CENTRAL-CENTRAL NIPPLE
	3545SE-CR			SIN MANTENIMIENTO - LIFETIME VERSION
3548	3548-CR	65,0	172,0	ENGRASADOR CENTRAL-CENTRAL NIPPLE
	3548SE-CR			SIN MANTENIMIENTO - LIFETIME VERSION

REFERENCIA PART NUMBER	D	L	EQUIVALENCIA EQUIVALENCE
4010-CR	15	41	473.10
4020-CR	19	49,2	473.20
4030-CR	22	58,9	473.30
4000-CR	26	69,7	287.00
6015-CR	27	74,5	Compact 2015 687.15
4001-CR	30	81,8	287.10
6020-CR	30,2	82	Compact 2020 687.20
6025-CR	34,9	92,2	Compact 2025 687.25
6030-CR	34,9	106,4	Compact 2030 687.30
4002-CR	35	96,8	287.20
6035-CR	42	119,4	Compact 2035 687.35
6040-CR	47,6	135,1	Compact 2040 687.40
6045-CR	52	147,2	Compact 2045 687.45
6050-CR	49,2	154,9	Compact 2050 687.50
6055-CR	57	152	Compact 2055 687.55
6060-CR	59	167,7	Compact 2060 687.60
6065-CR	65	172	Compact 2065 687.65



JOCAR TRANSMISIONES S.L.

c/Lezeaga, 4 48002 Bilbao

Tlf 94 427 53 40 Fax 94 427 54 93

www.jocartransmisiones.com

e-mail: jocar@jocartransmisiones.com